

# Service Parts List

## ULTRA

### CONTENTS

Introduction .....	iii
Ordering Instruction .....	iii
General Notes .....	iii
Recommendation List .....	iv
Preconisation list .....	11-12
Note .....	13
Door and Grille Assemblies .....	14-17
Door Latches .....	18
Back Panel and Grille – Prior to S/N DAF90208950 .....	19
Back Panel and Grille – Starting with S/N DAF90208950 .....	20-21
Evaporator Assembly .....	22-23
Refrigeration Components .....	24-27
Clutch Assembly – NDM Only .....	28-29
Drive Assembly .....	30-33
Standby Motor and Idler – NDM Only .....	34
Condenser and Fan Shaft Assembly .....	35
Fuel Pump and Tank .....	36-37
Fuel Filter .....	38
Oil Filter and By-Pass Oil Filter Assemblies .....	39
Microprocessor Assembly – Starting with S/N CAY90178292 .....	40-41
Relay Box Assembly – Prior to S/N DAF90209264 .....	42
Relay Box Assembly – Starting with S/N DAF90209264 .....	43
Standby Box Assembly – 230 Volt .....	44
Standby Box Assembly – 380 Volt .....	45
Standby Box Assembly – 200 & 230 Volt Phase Reversal .....	46
Standby Box Assembly – 380 Volt Phase Reversal .....	47
Coolant System .....	48-49
Clutch/Gearbox Assembly .....	50
Clutch Assembly (Gearbox) .....	51
Alternator Section and Related Components .....	52-53
Alternator .....	54
Engine Exhaust System .....	55
Air Filter Assembly .....	56
Solenoid Valves .....	57
Thermostatic Expansion Valve .....	58
Indicating Lamp Bar .....	58
Battery Box .....	59
Decals and Wire Harnesses .....	60-61
Noise Reduction Kit .....	62



**Carrier**

A United Technologies Company

Carrier Transicold E.T.O. - B.P. 16 - 76520 Franqueville-Saint-Pierre - FRANCE  
Carrier Transicold Division, Carrier Corporation, P.O. Box 4805, Syracuse, N.Y. 13221

# NDA-93A/94A/94D/NDM-94A/94D

---

## MODEL CHARTS

<b>Modèle</b>	<b>Nom</b>	<b>Réfrigérant</b>	<b>Compresseur</b>	<b>Moteur élect.</b>	<b>Moteur</b>
NDA-93A	Phoenix Ultra	R-404A	05G41	--	CT4-134TV
NDA-94A	Phoenix Ultra	R-22	05G41	--	CT4-134TV
NDA-94A EURO	Phoenix Ultra	R-22	05G37	--	CT4-134TV
NDA-94D	Phoenix Ultra XL	R-22	05G41	--	CT4-134DI
NDM-94A	Phoenix Ultra	R-22	05G37	230, 60 hz	CT4-134TV
NDM-94D	Phoenix Ultra XL	R-22	05G37	230, 60 hz	CT4-134DI
NDM-94A EURO	Phoenix Ultra	R-22	05G37	380, 50 hz	CT4-134TV

# NDA-93A/94A/94D/NDM-94A/94D

## INTRODUCTION

This parts lists identifies service replacement parts for the CARRIER TRANSICOLD Phoenix ULTRA refrigeration units. This unit is designed for medium temperature cooling, heating and defrost for truck application.

Detailed parts identification for these items may be found in the applicable parts lists.

## ORDERING INSTRUCTION

All orders and inquiries for parts must include:

- Unit Serial Number
- Description of part as shown on list
- Part No.
- Quantity required

Address all correspondence for parts to the following address according to your living area.

You live in:	EUROPE (East/West) AFRICA - MIDDLE EAST	E.T.O.	AMERICA (North/Middle/South) N.A.O.
Address your orders to:	CARRIER TRANSICOLD E.T.O. Service Pièces de Rechange Franqueville-Saint-Pierre - B.P. 16 76520 BOOS - FRANCE Phone : (33).2.35.79.46.46 Fax : (33).2.35.79.22.32		CARRIER TRANSICOLD Division Replacement Components Group TR-20 P.O. Box 4805, Syracuse, NY 13221 or Fax to : (315) 432.3778

## GENERAL NOTES

To find replacement parts, determine major group in which replacement part is located, consult table of contents for the appropriate page for the illustrated breakdown of the replacement part.

The following letter designations are used to classify parts throughout this list.

A/R	As Required.	NSS	<i>Not Sold Separately - order next higher assembly or kit.</i>
NLO	<i>No Longer Offered.</i>	PL	<i>Purchase Locally.</i>
NS	<i>Not Shown in the illustration.</i>	SST	<i>Stainless Steel - 300 Series unless otherwise specified.</i>
NSA	Non-Stock Assembly - order components listed under the assembly	SV - SK	<i>Suffix SV - SK added to part number</i>
NSI	<i>Non-Stock - may be available on special order</i>		

# NDA-93A/94A/94D/NDM-94A/94D

---

## RECOMMENDATION LIST

To help you manage your stocks, a recommendation list is provided on the following page(s).

Item are classified into three categories.

**M** for maintenance

e.g. Filter, Belt, Electric motor brushes, Drier, Fuse, etc...

**C** for Critical

i.e. items without which the unit cannot restart.

**S** for Selection

Same level of necessity as C, but whose probability of requirement depends on the characteristics of the vehicle fleet, i.e. age of units and level of service provided to user (e.g. 24 hour a day service).

In the event of repair, only use original CARRIER PERFORMANCE PARTS.



# NDA-93A/94A/94D/NDM-94A/94D

PART NO.	DESCRIPTION	LOCATION	RECOMMAND	QTY
<b>PRECONISATION LIST</b>				
300032300	Filter lube oil	P36	M	1
300030400	Filter lube oil	P36	M	1
300107901	Filter fuel	P35	M	1
300109000	Filter fuel	P35	M	1
500016204	V-Belt, Water pump	P46	M	1
500017808	V-Belt, Compressor Drive	P31	M	1
500017807	V-Belt, Condenser Fan	P35	M	1
500017851	V-Belt, Stanby-Motor (Set) NDM	P34	M	1
500016208	V-Belt, Alternator	P53	M	1
220233602	Fuse 5A	P42-43	M	3
220233608	Fuse 7,5A	P42-43	M	2
220233604	Fuse 10A	P42-43	M	1
220233606	Fuse 15A	P42-43	M	2
220233601	Fuse 20A	P42-43	M	1
220233605	Fuse 25A	P42-43	M	2
220233609	Fuse 80A	P42-43	M	1
140020900	Drier, filter	P25	M	1
140020920	O. Ring filter	P25	M	2
300107701	Air filter	P56	M	1
300039330	Regulator and brushes Assy	P54	M	1
120025603	Thermostat Defrost	P23	C	1
220163601	Sensor Assy RAS	P23	C	1
120030300	Switch Air Pressure	P25	C	1
EK02KK105	Plug Fusible	P25	C	1
140019000	Valve Quench	P25	C	1
140019006	Valve Quench	p25	C	1
505002500	Kit Shoe Assy	P29	C	1
0400018	Bearing	P31	C	3
480004600SV	Package Drive Gear NDA	P31-53	C	1
100036100	Solenoid	P31	C	1
120030901	Switch HP1	P33	C	1
120030902	Switch HP1	P33	C	1
120025502	Switch HP2	P33	C	1
120028300	Transducer SPT	P33	C	1
120028400	Sensor CDT	P33	C	1
253917003	Solenoid fuel	P33	C	1
480103923	Bearing	P34	C	2
500114800SV	Shaft bearing Assy	P35	C	1
120110404	Sensor Ambient	P35	C	1
120031000	Switch Oil pressure	P39	C	1
120030700SV	Display Assy	P41	C	1
220164100	Cable Assy	P41	C	1
100032700	Switch toggle	P41-43	C	1
580412800	Boot	P41	C	1
100032800	Relay 70A	P42-43	C	2
100028604	Relay 40A	P42-43	C	12
100031900	Diode block (12v)	P42-43	C	3
100116410	Switch toggle	P42-43	C	1
100028603	Relay (fuel Heater)	P43	C	1
100035100	Relay Overload base	P45-47	C	1
100035000	Relay	P45-47	C	1
120031200	Sensor water	P46	C	1

# NDA-93A/94A/94D/NDM-94A/94D

PART NO.	DESCRIPTION	LOCATION	RECOMMAND	QTY
<b>PRECONISATION LIST</b>				
500021521SV	Rotor Assy	P51	C	1
220256700	Coil 12v (SV2 et SV4)	P57	C	1
160051202	Kit repair (SV1)	P57	C	1
140014705	Coil 12v (SV1)	P57	C	1
140111450	Kit repair (SV1)	P57	C	1
140014503	Coil 12v (SV3)	P57	C	1
1400111350	Kit repair (SV3)	P57	C	1
140110404	Kit repair R22	P58	C	1
140109505	Kit repair R404A	P58	C	1
140237	Valve Check	P25	S	1
730016800	Vibrasorber Discharge	P25	S	1
730031400	Vibrasorber Suction	P25	S	1
500022500	Clutch Assy	P29	S	1
480005826	Pulley Assy	P31	S	1
100036122	Clevis	P31	S	1
730032100SV	Linkage	P31	S	1
440104901	Clevis clip	P31	S	1
1800059103RM	Compressor O5G41 NDA	P33	S	1
180005100	Compressor O5G37 NDA	P33	S	1
1800059106RM	Compressor O5G37 NDM	P33	S	1
1800059105	Compressor O5G41 NDA R404A	P33	S	1
253913500	Starter	P33	S	1
480103900	Idler Assy	P34	S	1
910028145	Logic Board	P41	S	1
220053801	Ammeter	P42-43	S	1
220168800	Module Relay	P43	S	1
220233800	Fuse Holder (fuel heater)	P42-43	S	1
100027900	Contacteur	P45-47	S	1
580408000	Hose Radiator Rubber	P46	S	1
580408001	Hose Radiator Silicone	P46	S	1
580407900	Hose Radiator Rubber	P46	S	1
580407901	Hose Radiator Silicone	P46	S	1
500021300	Idler Assy	P46	S	1
300039700	Cap Radiator	P46	S	1
5800743	Cap bottle	P46	S	1
500021400	Gearbox Assy	P50	S	1
500021438SV	Seal Shaft (drive)	P50	S	1
500021444SV	Seal Shaft (clutch)	P50	S	1
500021501SV	Clutch Assy	P51	S	1
300039300	Alternator	P54	S	1
580129800	Hose formed	P56	S	1
580424900	Hose formed	P56	S	1

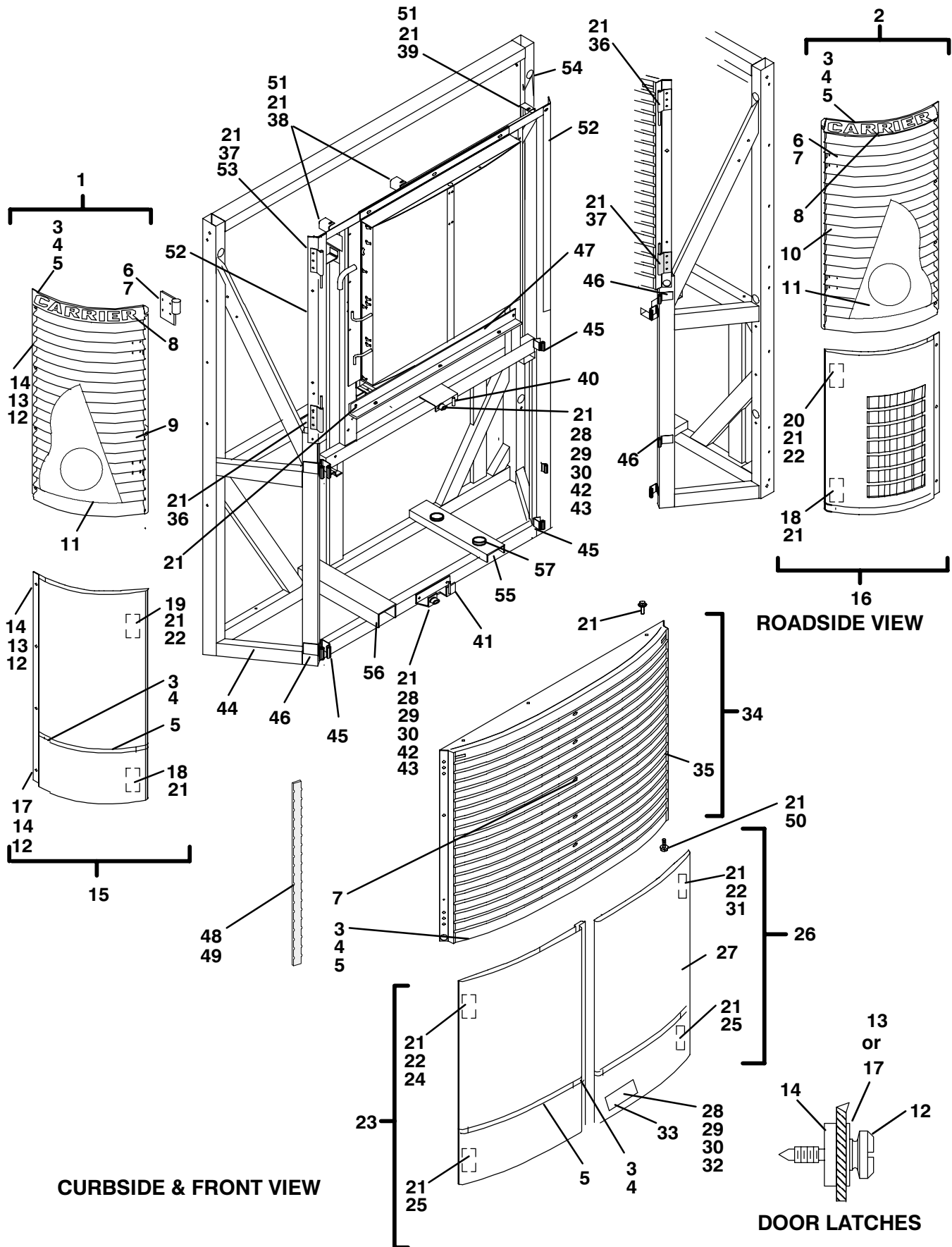
# NDA-93A/94A/94D/NDM-94A/94D

---

NOTE

# NDA-93A/94A/94D/NDM-94A/94D

## DOOR AND GRILLE ASSEMBLIES



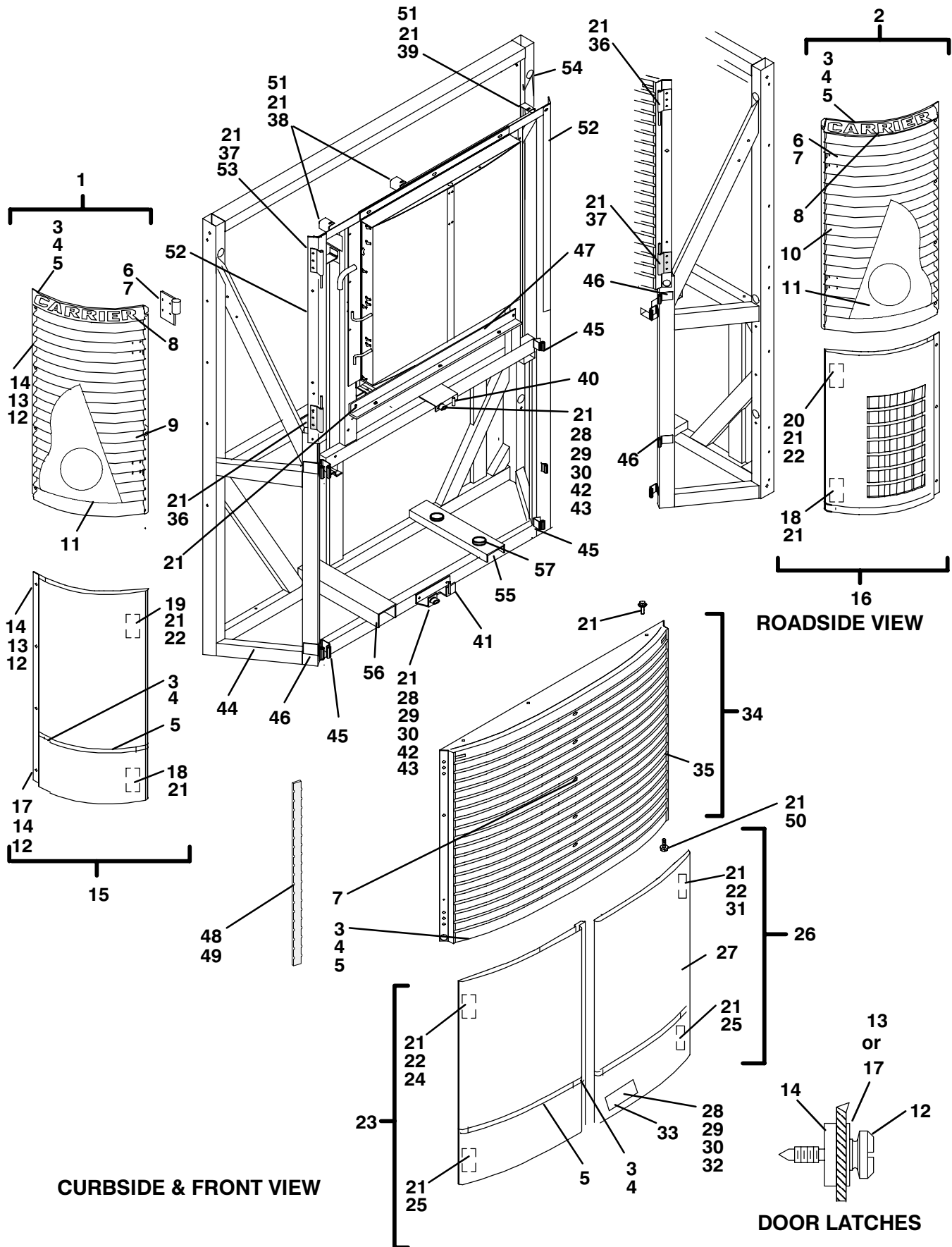


# NDA-93A/94A/94D/NDM-94A/94D

ITEM	PART NO.	DESCRIPTION	QTY
<b>DOOR AND GRILLE ASSEMBLIES</b>			
1	79-01654-00	Grille Assembly, <b>Curbside</b> -- Includes:	1
2	79-01655-00	Grille Assembly, <b>Roadside</b> -- Includes:	1
2	79-01655-02	Grille Assembly, <b>Roadside, Fresh Air</b> -- Includes:	1
3	34-06122-00	Rivet, Blind, 5/32 Dia, .040-.295 Grip Range (NSI)	4
4	58-04077-00	Cap, Trim	4
5	58-00901-00F06	Trim, Automotive (6 ft, cut to length)	A/R
6	44-00326-00	Hinge, Slip -- SST	2
7	34-06025-06	Screw, Hex Head w/cap washer 1/4-20 x 1 lg -- SAE	8
8	62-02507-00	Decal, Carrier	1
9	NSS	Grille, <b>Curbside</b>	1
10	NSS	Grille, <b>Roadside</b>	1
11	62-03883-00	Decal, Phoenix Ultra	1
12	34-06127-00	Screw, Thumb, 1/4-20 x .94 lg Black -- SST	4
13	34-06089-00	Washer, Fender, Black	4
14	58-04118-00	Washer, Neoprene,	4
NS	34-06051-06	Rivnut (Mates with thumb screw on doors)	A/R
15	58-04090-00	Door Assembly, Side, <b>Curbside</b> -- Includes:	1
15	58-04090-05	Door Assembly, Side, <b>Curbside, Units w/Integral Tank</b> -- Includes:	1
16	58-04091-00	Door Assembly, Side, <b>Roadside</b> -- Includes:	1
3	34-06122-00	Rivet, Blind, 5/32 Dia, .040-.295 Grip Range (NSI)	2
4	58-04077-00	Cap, Trim	2
5	58-00901-00F06	Trim, Automotive (6 ft, cut to length)	A/R
12	34-06127-00	Screw, Thumb, 1/4-20 x .94 lg Black -- SST	4
13	34-06089-00	Washer, Fender, Black	1
14	58-04118-00	Washer, Neoprene,	4
17	34-06135-00	Washer, Fender, White	3
18	44-00322-00	Hinge, Pin, Side Door	1
19	44-00323-01	Hinge, Release, Door, <b>Curbside</b>	1
20	44-00323-00	Hinge, Release, Door, <b>Roadside</b>	1
21	34-00918-06	Screw, Hex Head w/cap washer 1/4-20 x 3/4 lg -- SAE	8
22	68-11566-00	Plate -- SST (NSI)	1
23	58-04093-00	Door Assembly, Front, <b>Curbside</b> -- Includes:	1
3	34-06122-00	Rivet, Blind, 5/32 Dia, .040-.295 Grip Range (NSI)	2
4	58-04077-00	Cap, Trim	4
5	58-00901-00F06	Trim, Automotive (6 ft, cut to length)	A/R
21	34-00918-06	Screw, Hex Head w/cap washer 1/4-20 x 3/4 lg -- SAE	12
22	68-11566-00	Plate -- SST (NSI)	1
24	44-00320-01	Hinge, Release	1
25	44-00321-00	Hinge	1
26	58-04092-00	Door Assembly, Front, <b>Roadside</b> -- Includes:	1
27	58-04092-20	Door Assembly, Front, <b>Roadside</b> -- Includes:	1
3	34-06122-00	Rivet, Blind, 5/32 Dia, .040-.295 Grip Range (NSI)	2
4	58-04077-00	Cap, Trim	2
5	58-00901-00F06	Trim, Automotive (6 ft, cut to length)	A/R
21	34-00918-06	Screw, Hex Head w/cap washer 1/4-20 x 3/4 lg -- SAE	12
22	68-11566-00	Plate -- SST (NSI)	1
25	44-00321-00	Hinge	1
28	34-00216-18	Screw, Round Head, #10-32 x 1-1/8 lg (NSI)	3
29	34-00360-09	Nut, Lock #10-32 (NSI)	1
30	34-00366-09	Washer, Plain, #10 (NSI)	1
31	44-00320-00	Hinge, Release	1
32	58-00913-00	Bumper	1
33	--	Latch Assembly -- Refer to Section AUCUN LIEN	--
34	79-01653-00	Grille, Front -- Includes:	1
35	NSS	Grille, Front	1
3	34-06122-00	Rivet, Blind, 5/32 Dia, .040-.295 Grip Range (NSI)	4
4	58-04077-00	Cap, Trim	4
5	58-00901-00F06	Trim, Automotive (6 ft, cut to length)	A/R

# NDA-93A/94A/94D/NDM-94A/94D

## DOOR AND GRILLE ASSEMBLIES



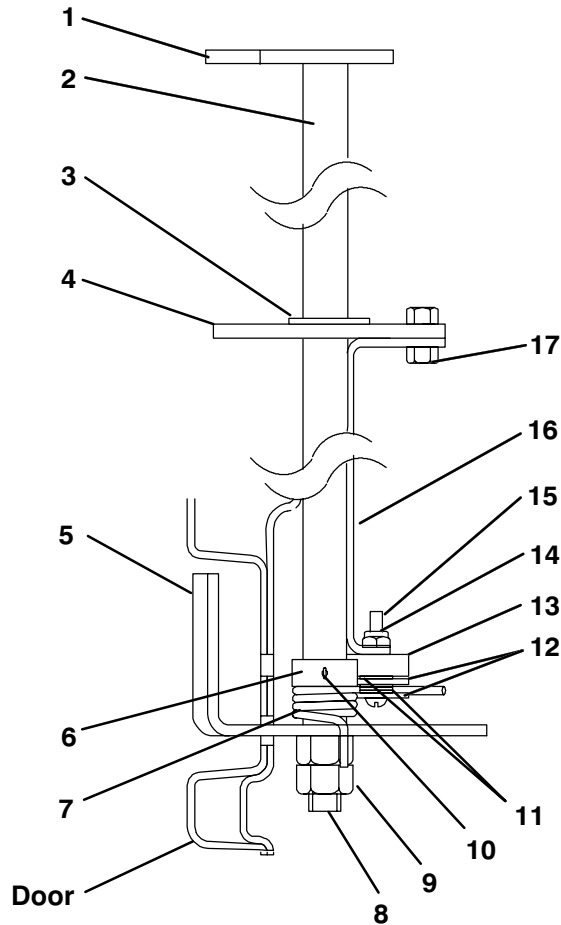
# NDA-93A/94A/94D/NDM-94A/94D

ITEM	PART NO.	DESCRIPTION	QTY
<b>DOOR AND GRILLE ASSEMBLIES (CONTINUED)</b>			
21	34-00918-06	Screw, Hex Head w/cap washer 1/4-20 x 3/4 lg -- SAE	A/R
7	34-06025-06	Screw, Hex Head w/cap washer 1/4-20 x 1 -- SAE	A/R
28	34-00216-18	Screw, Round Head, #10-32 x 1-1/8 (NSI)	2
29	34-00361-12	Nut, Lock, 5/16-18 (NSI)	2
30	34-00662-13	Washer, Plain, 3/8 (NSI)	4
36	44-00327-01	Hinge, Pin, Grille	2
37	44-00327-00	Hinge, Pin, Grille	2
38	68-11615-00	Angle, Front Grille	2
39	68-11615-01	Angle, Front Grille	1
40	86-04026-01	Bracket Assembly, Latch Pin	1
41	86-04025-01	Bracket Assembly, Latch Pin	1
42	58-04194-00	Bumper, Molded with 5/16-18 stud	2
43	58-00836-03	Spacer, Nylon	2
44	79-02287-01	Frame Assembly, Main -- Includes:	1
45	44-00324-00	Hinge, Leaf, Single (Welded to Frame)	4
46	44-00325-00	Hinge, Leaf, Single (Welded to Frame)	4
47	68-11613-00	Angle, Grille Mounting	1
48	58-04097-00	Gasket (Located behind front grille)	2
49	58-01288-01	Rivet, Ratchet	12
50	34-06040-00	Nut, Speed "U" Type	3
51	34-00662-20	Washer, Plain, Special	3
52	68-07204-00	Angle, Grille	2
53	34-06051-07	Rivnut, 1/4-20	A/R
54	58-00701-04	Button, Plug	8
55	68-06911-00	Channel, Mounting (NSI)	1
56	68-11628-01	Channel, Mounting (NSI)	1
57	48-00271-00	Spacer, Mounting (NSI)	2

# NDA-93A/94A/94D/NDM-94A/94D

ITEM	PART NO.	DESCRIPTION	QTY
------	----------	-------------	-----

**DOOR LATCHES**

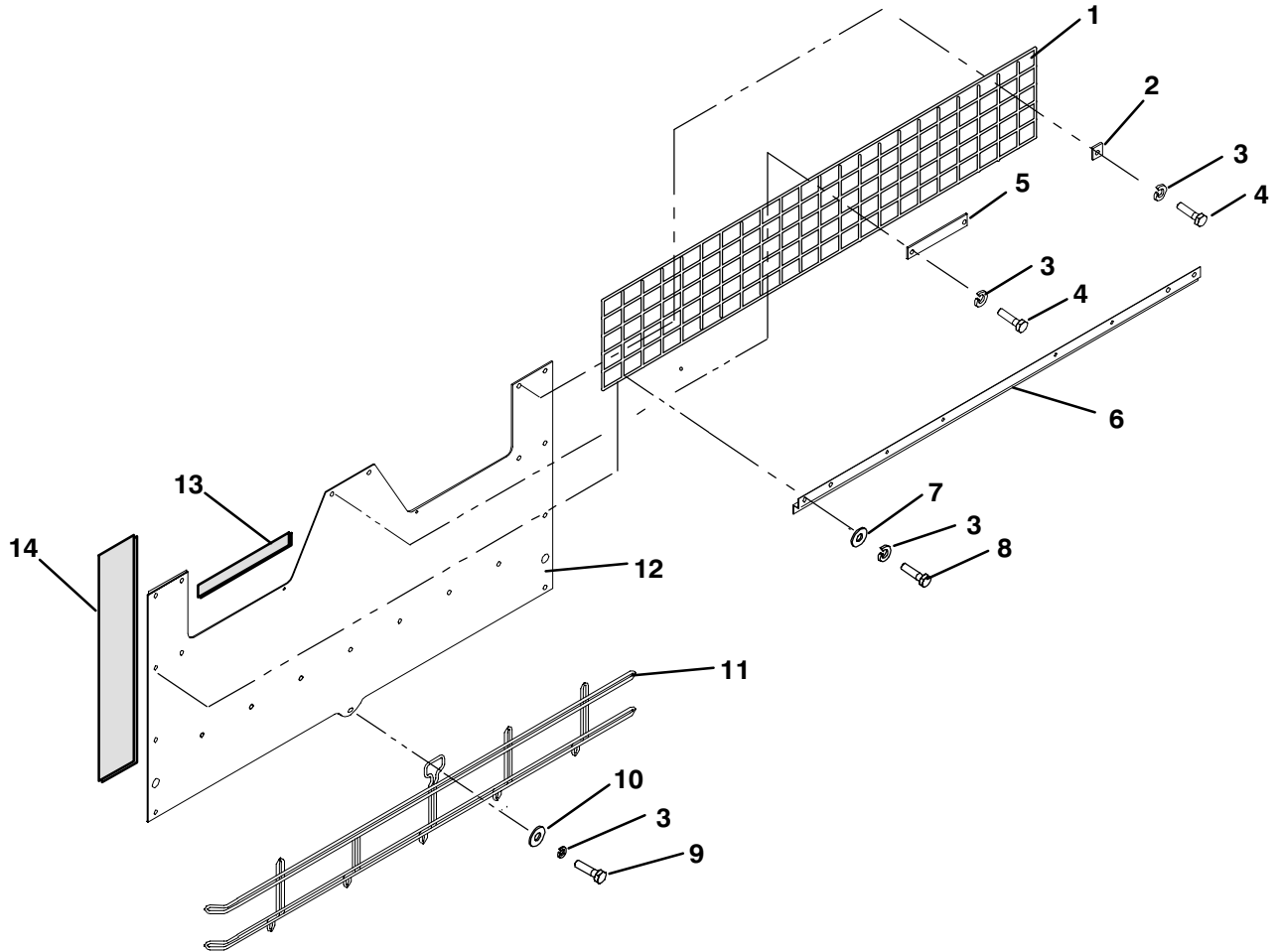


--	86-04035-00	Latch Assembly -- Includes:	1
1	68-11534-00	Latch, Door	1
2	56-06936-00	Tube, Door Latch	1
3	PL	Washer, Plain 1/2 SAE -- SST	1
4	68-11533-00	Plate, Door Latch	1
5	68-11535-00	Handle, Door Latch	1
6	48-00270-00	Collar	1
7	73-00165-00	Spring	1
8	48-00269-00	Adapter	1
9	PL	Nut, Hex 3/8-16 -- SST	2
10	34-00735-01	Pin, Cotter (1/16 Dia x 1 lg) -- SST	1
11	PL	Washer, Plain, #6 -- SST	4
12	34-00616-03	Washer, Special -- SST	2
13	58-00836-08	Nylon Spacer	1
14	PL	Nut, Self Lock, #6-32, UNC 2B -- SST	1
15	PL	Screw, Round Head, #6-32 x 1 -- SST	1
16	68-11569-00	Channel, Latch -- SST	1
17	PL	Nut, Self Lock, 1/4-20	2
NS	68-11531-00	Channel, Latch (Upper) -- SST	1
NS	68-11529-00	Plate, Latch	2

# NDA-93A/94A/94D/NDM-94A/94D

ITEM	PART NO.	DESCRIPTION	QTY
------	----------	-------------	-----

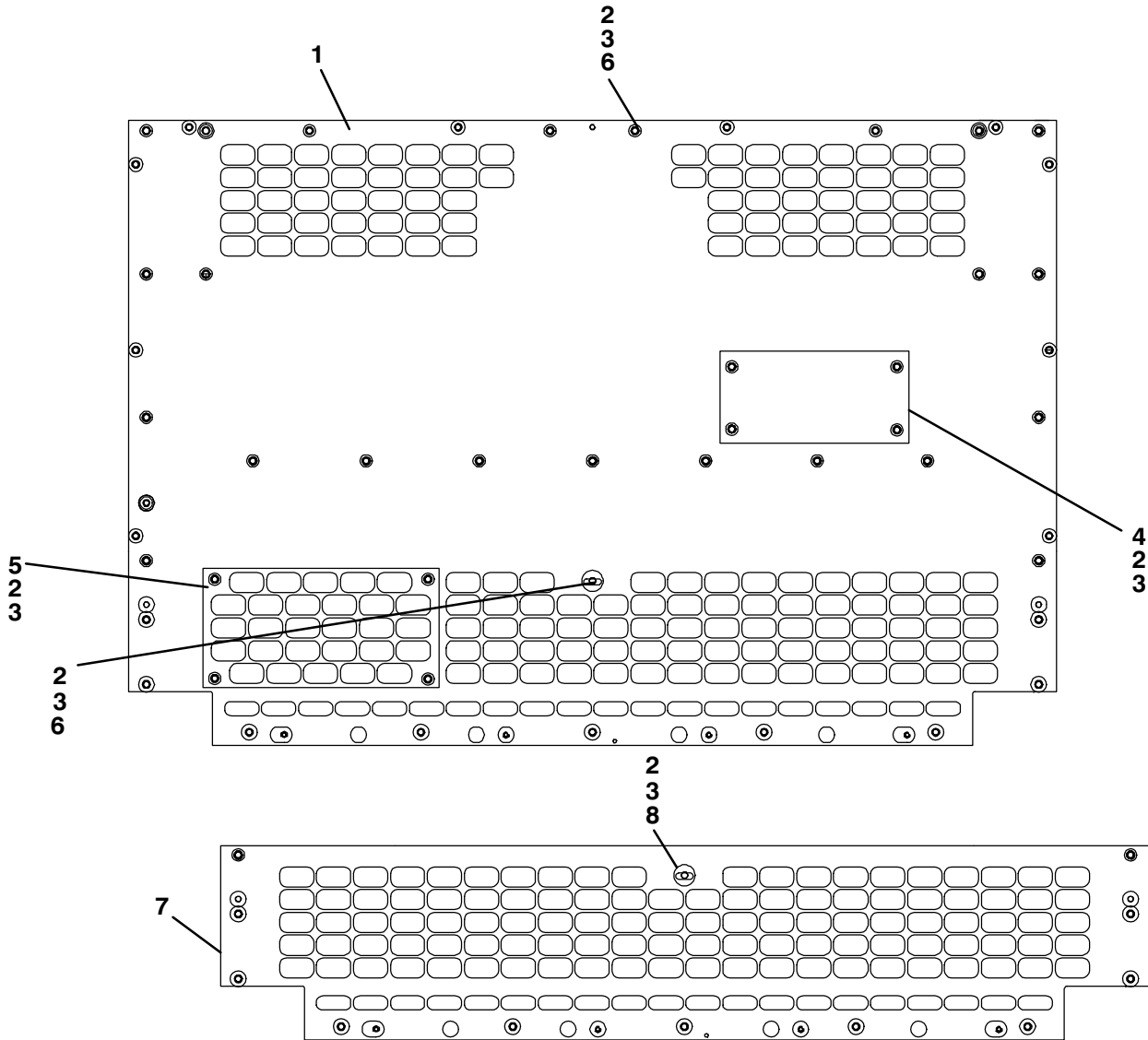
BACK PANEL AND GRILLE -- PRIOR TO S/N DAF90208950



1	68-11631-00	Screen, Top	1
2	68-11633-00	Plate	4
3	PL	Washer, Lock, 1/4 -- SST	41
4	PL	Screw, Cap Hex Head, 1/4-20 x 3/4 -- SST	17
5	68-11632-00	Plate	1
6	79-02264-00	Channel, Zee	1
7	34-00662-20	Washer, Special -- SST	26
8	PL	Screw, Cap Hex Head, 1/4-20 x 1-1/4 -- SST	10
9	PL	Screw, Cap Hex Head, 1/4-20 x 1 -- SST	14
10	34-00662-19	Washer, Special -- SST	1
11	86-04046-00	Grille, Lower Back	1
12	79-02258-00	Panel, Back -- Includes:	1
13	42-00256-00	Gasket, Back Panel -- Horizontal (NSI)	1
14	42-00257-00	Gasket, Back Panel -- Vertical (NSI)	2

# NDA-93A/94A/94D/NDM-94A/94D

BACK PANEL AND GRILLE -- STARTING WITH S/N DAF90208950

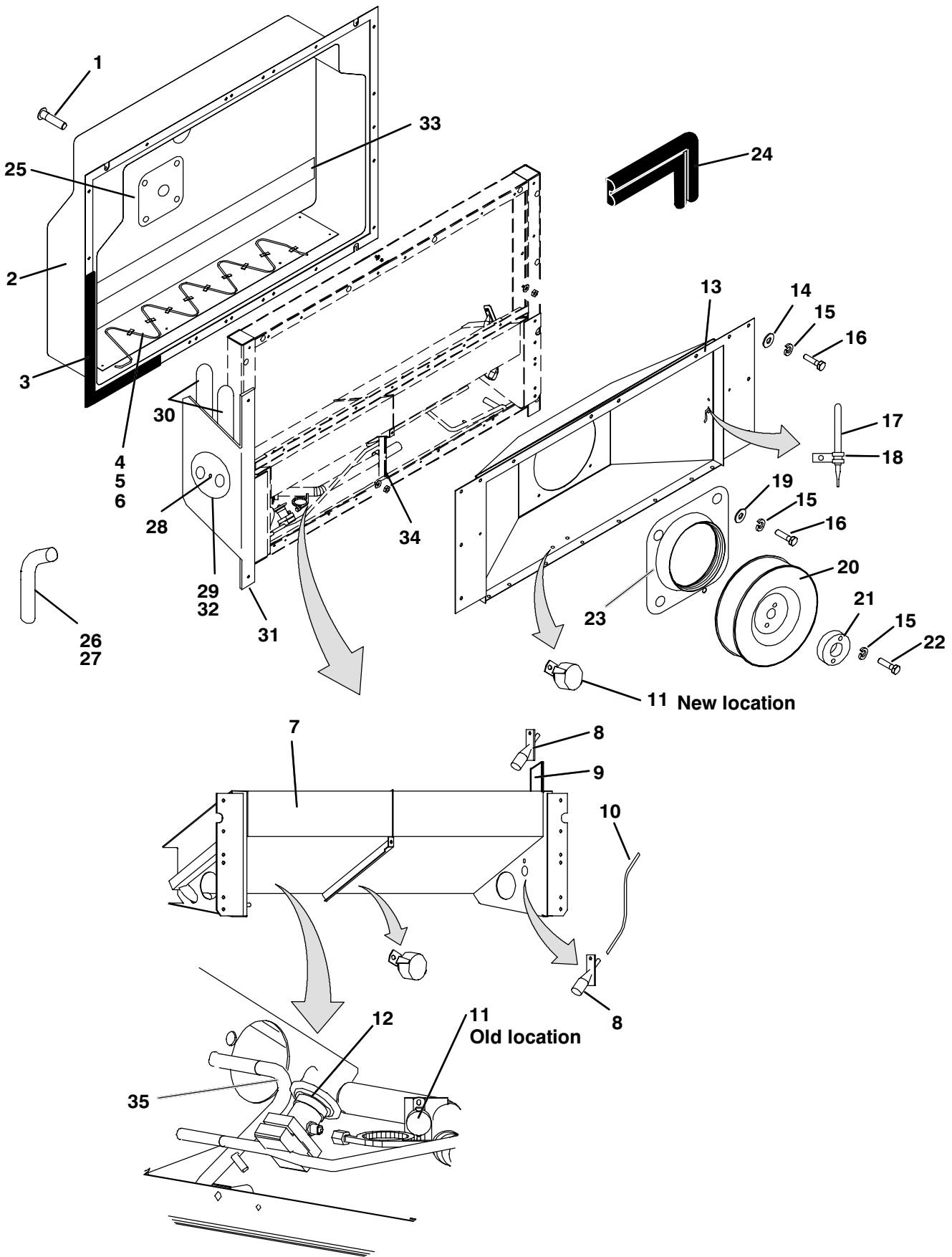


# NDA-93A/94A/94D/NDM-94A/94D

ITEM	PART NO.	DESCRIPTION	QTY
<b>BACK PANEL AND GRILLE -- STARTING WITH S/N DAF90208950</b>			
1	68-07232-00SV	Panel, Back -- Includes:	1
2	PL	Screw, Cap Hex Head, 1/4-20 x 1 -- SST	A/R
3	PL	Washer, Lock, 1/4 -- SST	A/R
4	68-07236-00	Cover (NSI)	1
5	68-07233-00	Cover (NSI)	1
6	34-00662-20	Washer, Special -- SST	A/R
7	68-07199-00	Panel, Back (Lower) <b>S/N DAF90208950 thru S/N DAX90282985</b>	1
8	34-00662-19	Washer, Special -- SST <b>S/N DAF90208950 thru S/N DAX90282985</b>	1
NS	42-00256-00	Gasket, Back Panel -- Horizontal (NSI)	1
NS	42-00257-00	Gasket, Back Panel -- Vertical (NSI)	2

# NDA-93A/94A/94D/NDM-94A/94D

## EVAPORATOR ASSEMBLY



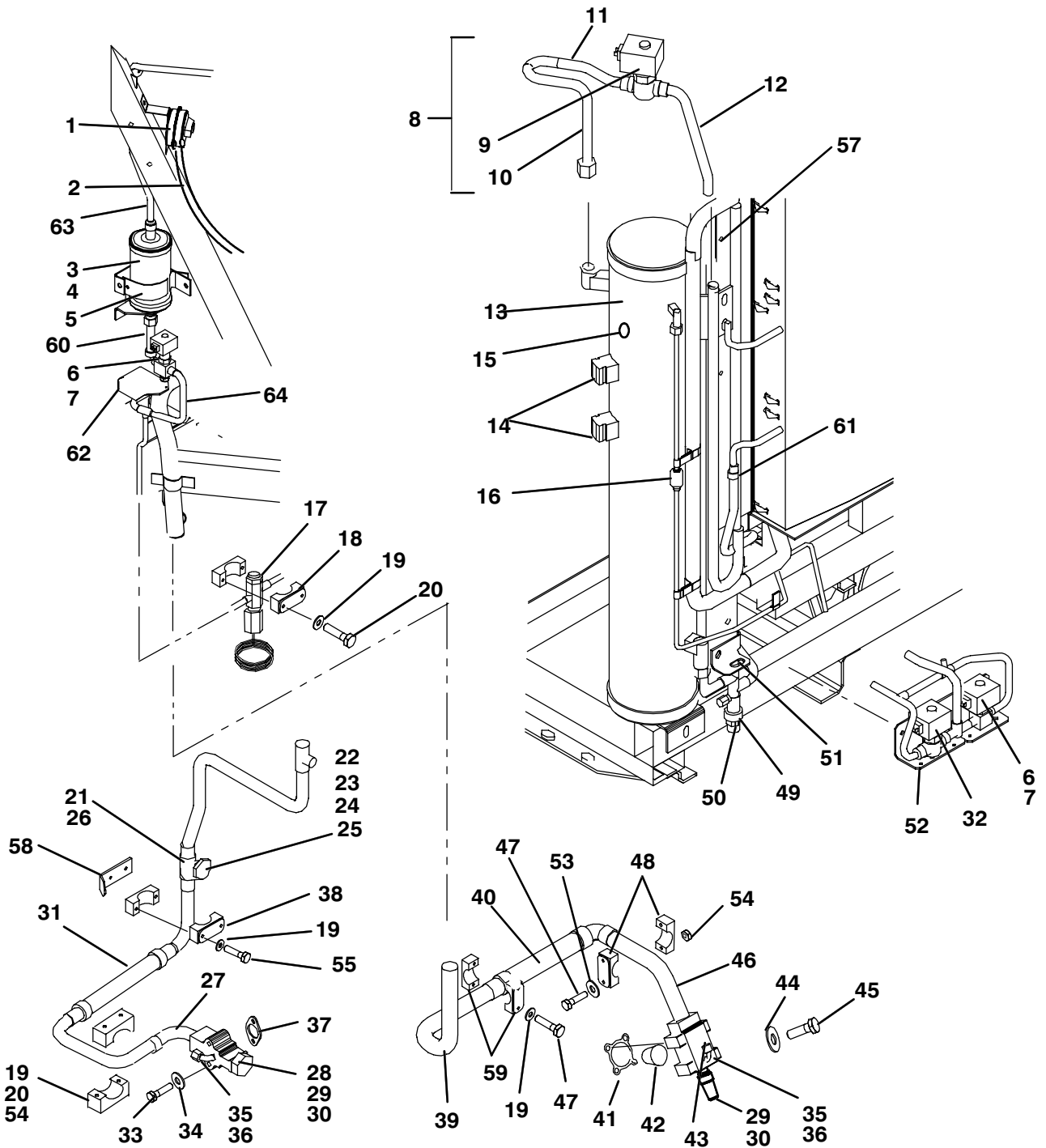


# NDA-93A/94A/94D/NDM-94A/94D

ITEM	PART NO.	DESCRIPTION	QTY
<b>EVAPORATOR ASSEMBLY</b>			
1	34-00960-16	Screw, Socket, Flat Head, 1/4-20 x 1 (NSI)	4
2	58-04070-00	Pod, Evaporator	1
2	58-01292-00	Pod, Evaporator -- <b>Air Exchange</b> (NSI)	1
3	42-01156-00	Gasket, Evaporator Pod to Evaporator Frame	1
4	86-04109-00	Defrost Plate Assembly -- Includes: (NSI)	1
5	NSS	Plate, Defrost	1
6	NSS	Tube, Serpentine	1
7	08-00209-00	Coil, Evaporator -- <b>R-22</b>	1
7	08-00211-00	Coil, Evaporator -- <b>R-404A</b>	1
NS	08-00197-01	Heat Exchanger -- <b>R-404A</b>	1
8	58-00793	Fitting, Air Sensing	2
9	68-10745-00	Bracket, Air Sensing Fitting (NSI)	1
10	58-01071-00F25	Tube, Vinyl (25 ft cut to length)	A/R
NS	22-01721-00	Harness, <b>DTT</b> -- Includes:	1
11	12-00256-03	Thermostat, Defrost Termination (Klixon)	2
12	--	Valve, Expansion (TXV) -- Refer to Section AUCUN LIEN	1
13	86-04105-00	Housing, Blower (NSI)	1
14	PL	Washer, Plain, 1/4 -- SST	A/R
15	PL	Washer, Lock, 1/4 -- SST	A/R
16	34-00655-06	Screw, Machine Hex Head, 1/4-20 x 3/4 w/cap washer -- SST (NSI)	A/R
17	22-01636-01	Sensor Assembly, <b>RAS</b> -- Includes:	1
NS	76-50054-00	Probe Kit, Supply Air -- Includes:	1
17	22-01636-00	Sensor Assembly, <b>SAS</b> -- Includes:	1
NS	12-01072-01SV	Sensor, Thermostat	1
NS	22-50078-01SV	Connector, Male	1
NS	22-50078-02SV	Connector, Female (Mating Part 22-50078-01SV)	A/R
18	34-00373-51	Clamp, Sensor -- SST	1
19	34-00662-20	Washer, 9/32 ID (Special) -- SST	A/R
20	38-00136-00	Blower, Evaporator	1
21	04-00122-02	Bushing, Split Taper -- Includes:	1
22	PL	Bolt, Hex Head Capscrew, 1/4-20 x 3/4 (SAE Grade 5)	2
23	68-11617-00	Ring, Fan, Evaporator	1
24	58-01278-00	Seal, Unit to Trailer	1
25	81-02468-00	Plate Assembly -- <b>Air Exchange</b> (NSI)	1
26	58-00640-00	Hose -- <b>Air Exchange</b> (NSI)	1
27	44-00045-13	Clamp -- <b>Air Exchange</b> (NSI)	6
28	34-00915-03	Nut, Wing, #10-32, Self Locking -- <b>Air Exchange</b> (NSI)	1
29	42-01160-00	Gasket, Vent Plate -- <b>Air Exchange</b> (NSI)	1
30	58-01293-00	Hose, Formed -- <b>Air Exchange</b> (NSI)	2
31	86-02890-00	Bracket -- <b>Air Exchange</b> (NSI)	1
32	68-04446-01	Plate, Vent -- <b>Air Exchange</b> (NSI)	1
33	42-00258-00	Gasket	1
34	68-07020-00	Angle, Support (NSI)	1
35	56-06726-00	Tube, Hot Gas	1
NS	58-00253	Kazoo (Located on end of drain hose)	2
NS	58-00772-01	Hose, Drain, Molded (Cut to length)	2
NS	58-04104-00	Hose, Drain, Molded	1
NS	58-00712-15	Clamp, Drain Hose (NSI)	4
NS	79-02260-00	Frame, Evaporator (NSI)	1
NS	86-02885-00	Bracket, TXV Support (NSI)	1

# NDA-93A/94A/94D/NDM-94A/94D

## REFRIGERATION COMPONENTS

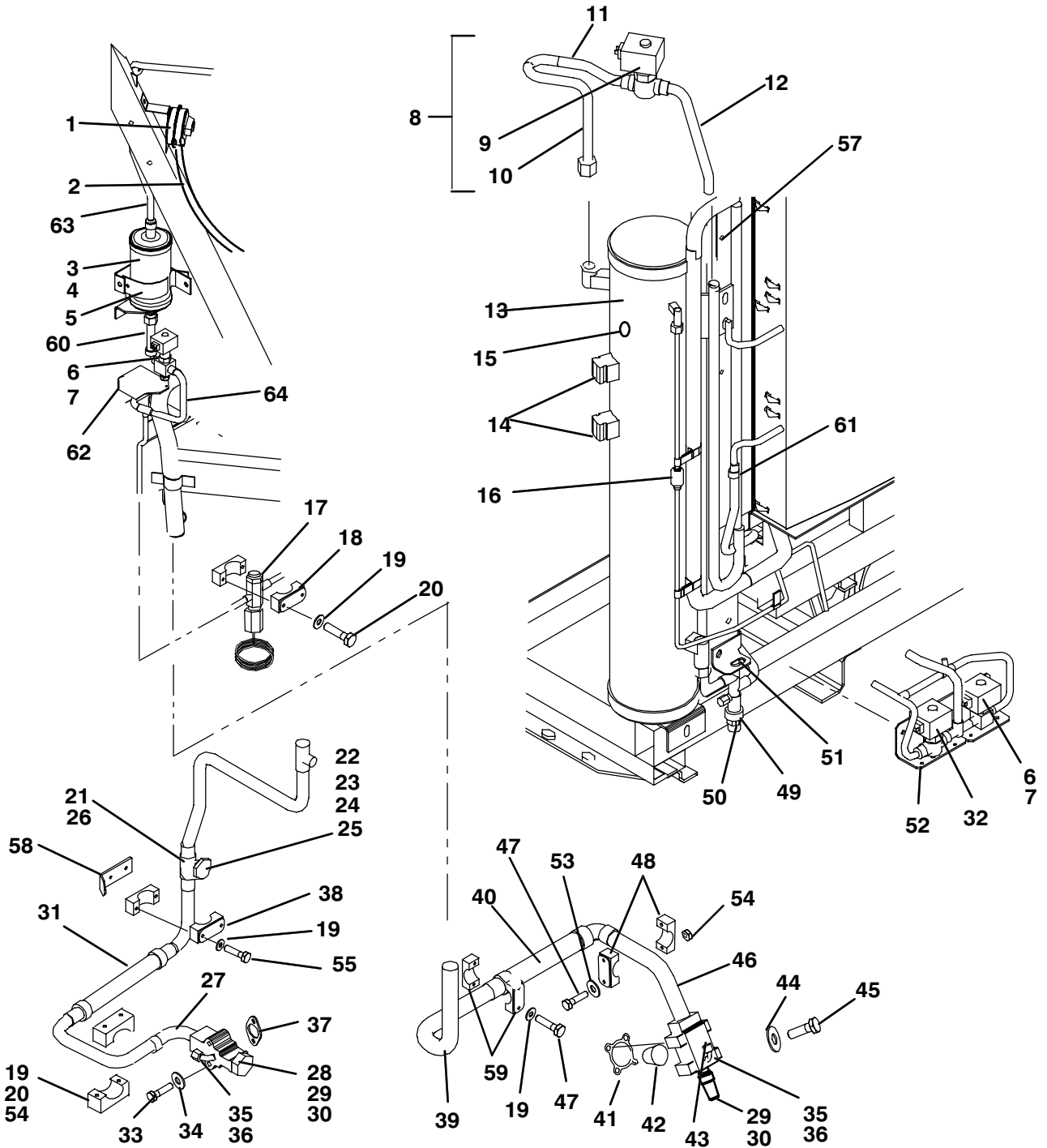


# NDA-93A/94A/94D/NDM-94A/94D

ITEM	PART NO.	DESCRIPTION	QTY
<b>REFRIGERATION COMPONENTS</b>			
1	12-00303-00	Switch, Air Pressure	1
2	58-01071-00F25	Tube, Low Pressure, Vinyl (25 ft. to be cut to length)	A/R
3	14-00209-00	Drier, Filter -- <b>High Moisture Capacity</b> -- Includes:	1
4	14-00209-20	O-Ring, Filter	2
5	68-11547-00	Bracket, Drier	1
6	--	Coil, Solenoid -- Refer to Section AUCUN LIEN	2
7	--	Valve, Solenoid (SV2 & SV4) -- Refer to Section AUCUN LIEN	2
8	81-01332-02	Valve Assembly (SV1) -- Includes: (NSI)	1
9	--	Valve, Solenoid (SV1) -- Refer to Section AUCUN LIEN	1
10	56-06942-02	Tube Assembly (NSI)	1
11	56-06943-00	Tube (NSI)	1
12	56-06903-01	Tube (NSI)	1
13	65-01061-02	Receiver Assembly -- Includes:	1
14	14-50023-00	Sight Glass (Prism Style)	2
NS	65-01061-20	Sight Glass (Ball Type, White) (Optional)	A/R
NS	14-00111-01	Sight Glass (Ball Type, Red) (Optional)	A/R
15	EK02KK105	Plug, Fusible, 1/4 mpt, Brass	1
16	140237	Valve, Check	1
17	14-00190-00	Valve, Quench <b>NDA/M-94A Prior to S/N DAS90258940</b>	1
17	14-00190-06	Valve, Quench <b>NDA/M-94A Starting with S/N DAS90258940</b>	1
18	44-00285-21	Clamp, 1" Tube	1
19	PL	Washer, Lock, 1/4 Spring	A/R
20	34-00300-16	Screw, Hex Head, 1/4-20 x 2 lg, Grade 5 (NSI)	A/R
NS	81-02493-00	Tube Assembly, Discharge -- Includes:	1
21	14-00029-07	Check Valve, Discharge, 7/8 -- Includes:	1
22	16-00171	Seat, Brass/Teflon	1
23	16-00172-01	Spring	1
24	16-03301	Gasket, Copper	1
25	16-00173	Cap	1
26	14-00176-00	Strainer, Check Valve	1
27	40-00072-07	Elbow	1
28	14-01042-04	Valve, Discharge Service -- Includes:	1
29	17-10812-00	Cap, Service Valve (Plastic) -- Includes:	1
30	17-10806-02	Gasket, Valve Cap	1
29	17-10806-10	Cap, Service Valve (Brass) -- Includes:	1
31	73-00166-00	Vibrasorber, Discharge <b>Prior to S/N CAY90178300</b>	1
32	--	Valve, Solenoid (SV3) -- Refer to Section AUCUN LIEN	1
33	34-00302-14	Screw, Hex Head, 5/16-18 x 1-3/4 lg, Grade 5 (NSI)	2
34	17-40013	Gasket, Screw	2
35	40-00086-04	Cap, Seal	2
36	40-00102-04	Elbow, 1/4 MFL x 1/4 mpt	2
37	17-10811-05	Gasket, Discharge Service Valve	1
38	44-00285-60	Clamp, 7/8 Tube OD	2
39	56-03466-02	Tube, Suction (NSI)	1
40	73-00314-00	Vibrasorber, Suction	1
41	17-40005-05	Gasket, Suction Service Valve	1
42	58-00869-00	Filter, Suction Valve	1
43	17-40002-01	Valve, Suction Service -- Includes:	1
29	17-10812-00	Cap, Service Valve (Plastic) -- Includes:	1
30	17-10806-02	Gasket, Seal	1
29	17-10806-10	Cap, Service Valve (Brass)	1
44	34-06038-00	Washer, Special (NSI)	4
45	34-00308-20	Screw, Hex Head -- 1/2-13 x 2.50 lg, Grade 5 (NSI)	4
46	56-06897-01	Tube, Suction (NSI)	1
47	34-00300-24	Screw, Hex Head, 1/4-20 x 3 lg, Grade 5 (NSI)	4
48	44-00285-20	Clamp, 1-3/8 OD Tube	1

# NDA-93A/94A/94D/NDM-94A/94D

## REFRIGERATION COMPONENTS

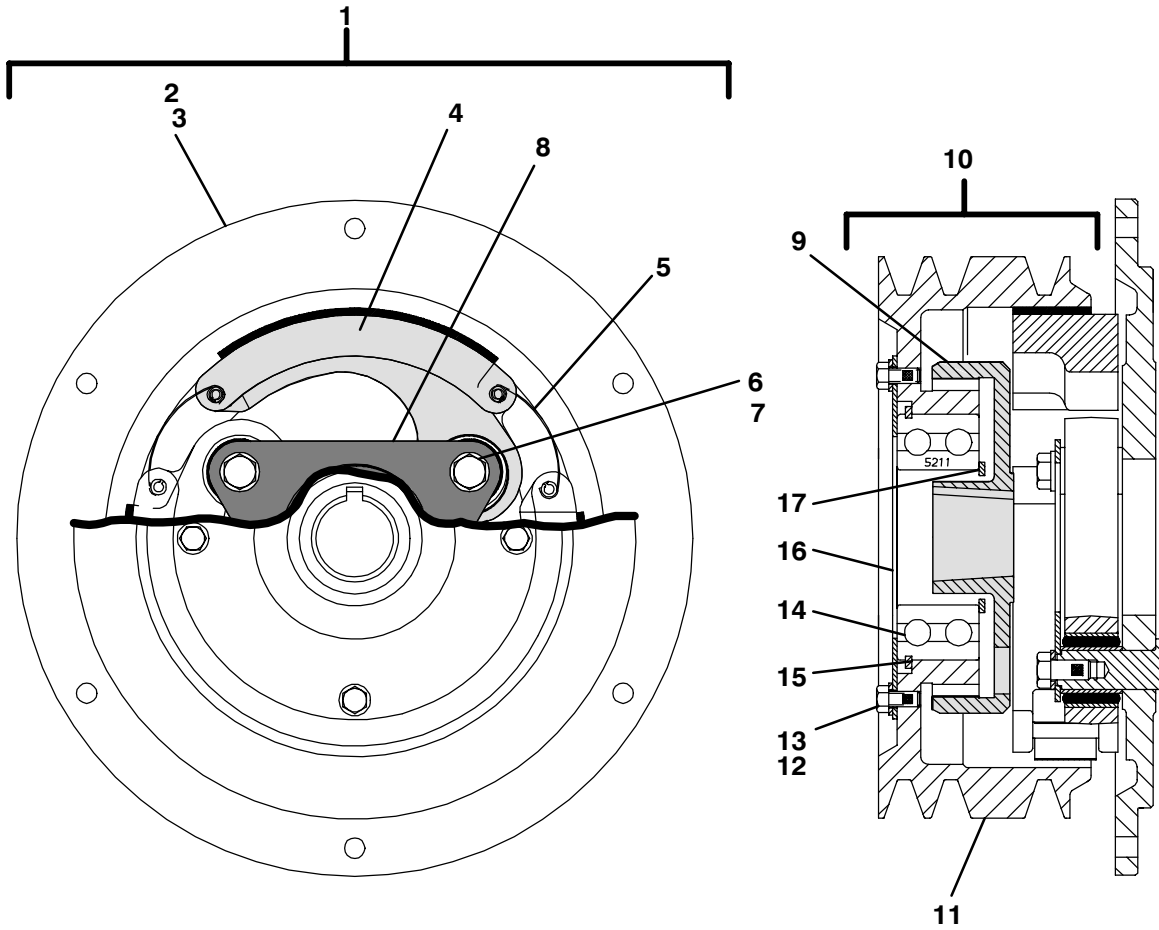


# NDA-93A/94A/94D/NDM-94A/94D

ITEM	PART NO.	DESCRIPTION	QTY
<b>REFRIGERATION COMPONENTS -- CONTINUED</b>			
49	40-00501-02	Valve, King -- Includes:	1
50	40-00501-50	Cap	1
51	68-06986-00	Bracket, King Valve (NSI)	1
52	68-11544-00	Bracket, Valve (SV3 & SV4) (NSI)	12
53	PL	Washer, Plain, 1/4	8
54	PL	Locknut, 1/4-20	6
55	44-00285-72	Clamp, 7/8 OD	2
56	34-00300-18	Screw, Hex Head, 1/4-20 x 2.25 lg, Grade 5 (NSI)	4
57	34-00918-06	Screw, Hex Head, 1/4-20 x 3/4 lg w/cap washer, Grade 5 -- SAE	27
NS	86-02799-00	Bracket, Support, Discharge Line	1
NS	62-03797-00	Label, R-22	3
NS	62-03802-12	Label, RTF -- <b>R-22</b> (NSI)	1
NS	62-03797-01	Label -- R404A	3
NS	62-03802-14	Label, RTF -- <b>R-404A</b> (NSI)	1
58	79-02286-00	Plate Assembly, Nut	1
NS	86-02803-00	Bracket, SV1 Valve	1
59	44-00285-40	Clamp	1
60	56-06961-00	Tube Assembly, Filter Drier -- Includes:	1
NS	NSS	Nut, Flare	1
61	40-00130-05	Coupling, Reducing	1
62	86-02803-00	Bracket, Mounting (SV-1)	1
63	81-01323-00	Tube Assembly, Filter Drier -- Includes:	1
NS	NSS	Nut, Flare	1
NS	40-00130-05	Coupling, Reducing	1
64	56-06653-09	Tube	1

# NDA-93A/94A/94D/NDM-94A/94D

CLUTCH ASSEMBLY -- NDM ONLY

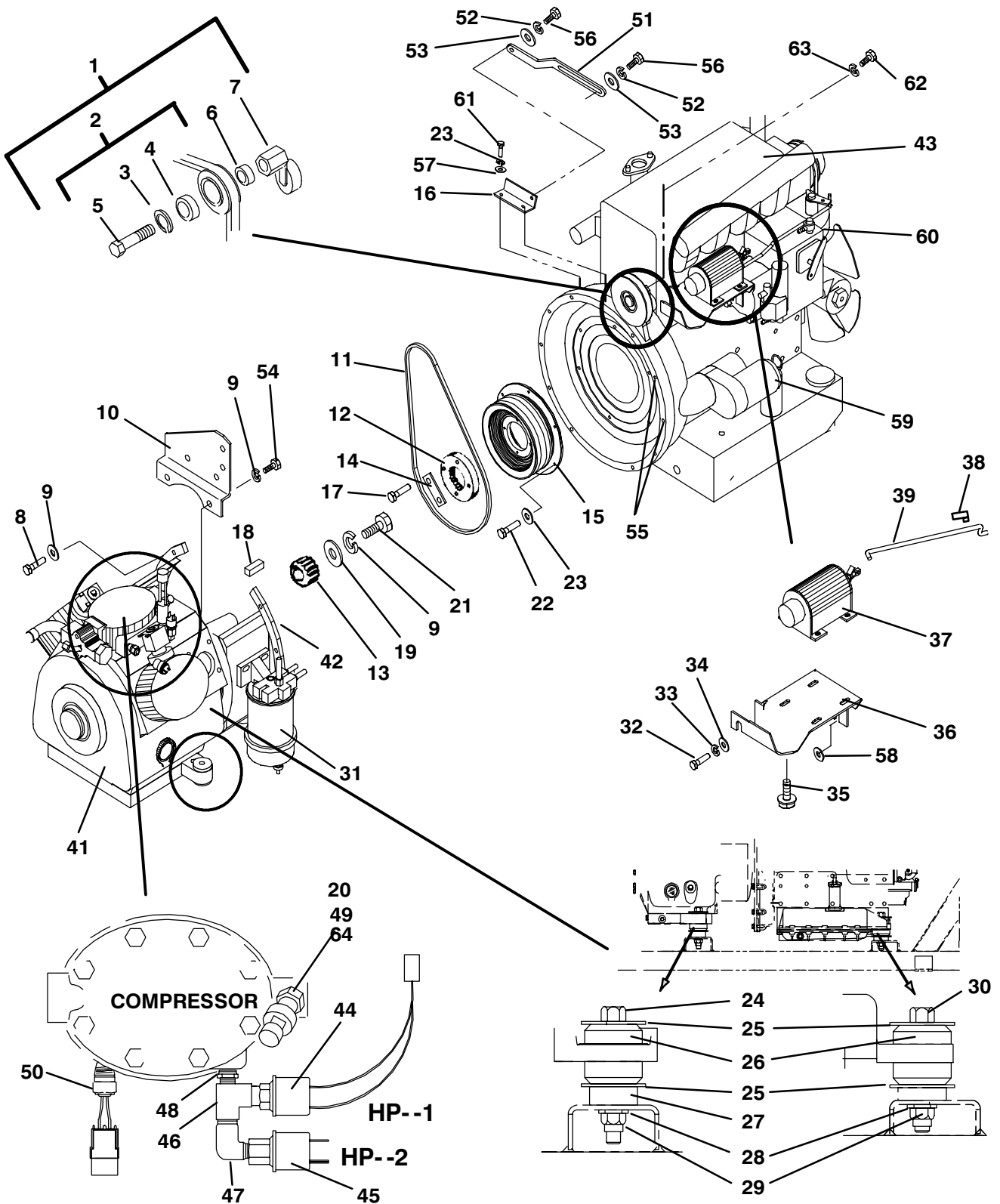


# NDA-93A/94A/94D/NDM-94A/94D

ITEM	PART NO.	DESCRIPTION	QTY
<b>CLUTCH ASSEMBLY -- NDM ONLY</b>			
1	50-00225-00	Clutch Assembly -- Includes:	1
2	50-00225-10	Rotor Assembly -- Includes:	1
3	NSS	Plate Assembly, Rotor	1
NS	50-50025-00	Kit, Shoe Assembly -- Includes:	1
4	NSS	Shoe Assembly, Friction -- Includes:	3
NS	NSS	Bushing	1
NS	NSS	Pin, Spring	2
5	50-00221-13	Spring, Leaf	3
6	34-00993-05	Screw, Hex Head, 5/16-24 x 5/8 lg -- SAE Grade 8 (NSI)	3
7	PL	Washer, Plain 5/16	3
8	50-00173-03	Delta Bridge	1
9	50-00221-40	Coupling, Adapter	1
10	50-00221-20	Housing Assembly -- Includes:	1
11	NSS	Housing	1
12	50-00221-25	Screw, Hex Head	4
13	50-00221-26	Washer	4
14	50-00221-22	Bearing Assembly, Ball -- Includes:	1
15	NSS	Ring, Snap	1
16	50-00221-24	Plate, Retaining	1
17	50-00221-30	Ring, Snap (External)	1
NS	17-44019-00	Compressor Clutch Mounting Hub	1

# NDA-93A/94A/94D/NDM-94A/94D

## DRIVE ASSEMBLY



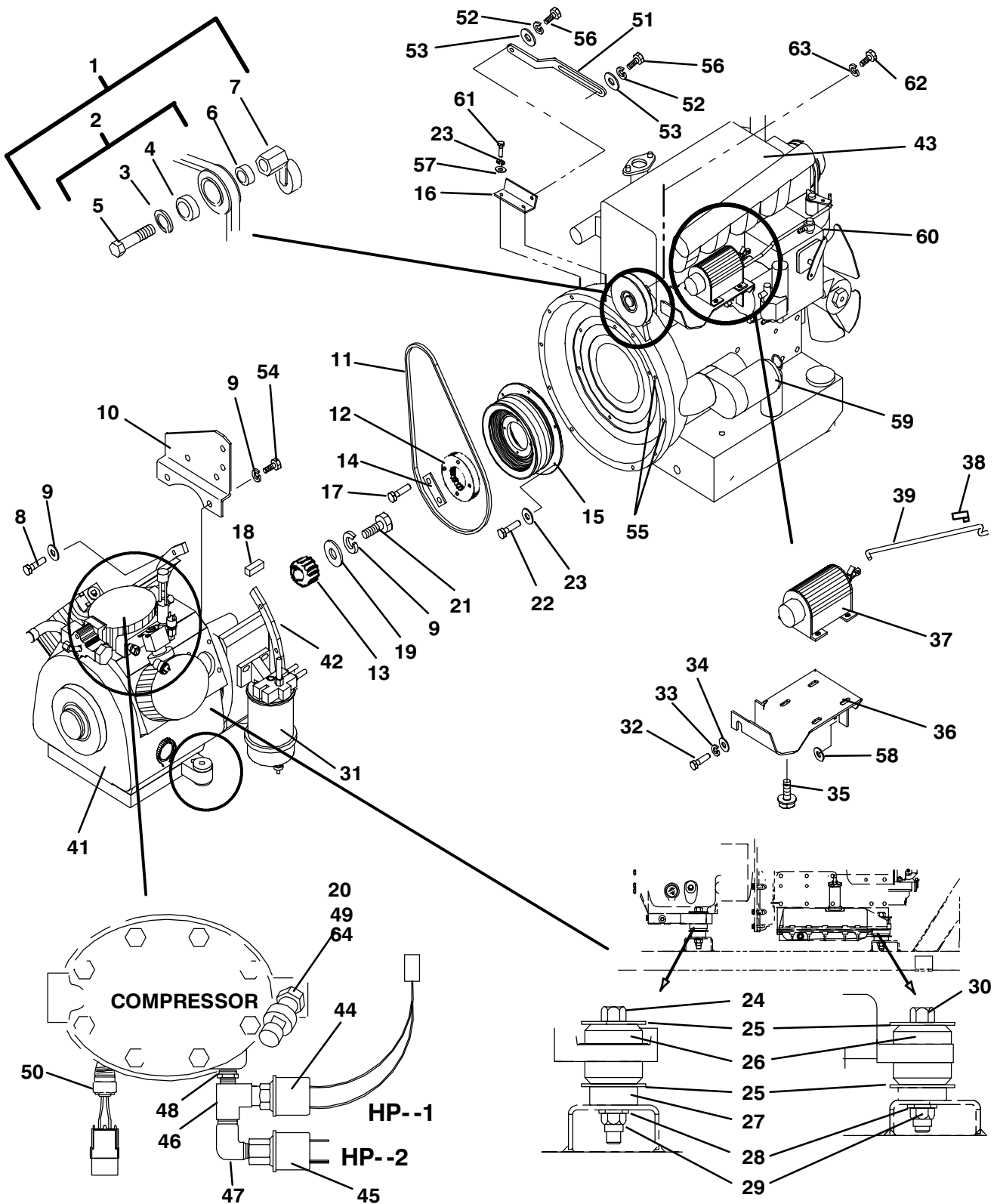


# NDA-93A/94A/94D/NDM-94A/94D

ITEM	PART NO.	DESCRIPTION	QTY
<b>DRIVE ASSEMBLY</b>			
1	50-00207-00	Pulley Assembly, Eccentric Idler -- Includes:	1
2	48-00058-26	Pulley Assembly -- Includes:	1
3	NSS	Ring, Retaining	1
4	04-00018	Bearing	1
5	48-00058-02	Bolt, Shoulder	1
6	48-00058-05	Spacer	1
7	48-00267-00	Eccentric	1
8	34-00304-08	Bolt, Hex Head, 3/8-16 x 1 lg, Grade 5	A/R
9	PL	Washer, Lock, 3/8	9
10	68-11604-00	Bracket -- <b>NDA</b>	1
10	48-00302-01	Bracket Assembly -- <b>NDM</b>	1
11	50-00178-08	V-Belt, Compressor Drive	1
NS	48-00046-00SV	Package, Drive Gear <b>NDA</b> -- Includes:	1
12	NSS	Gear, Nylon Drive -- <b>NDA</b>	1
13	NSS	Gear, Compressor Drive -- <b>NDA</b>	1
14	68-03850-00	Bar, Locking -- <b>NDA</b>	2
15	48-00263-00	Sheave, Compressor Drive -- <b>NDA</b>	1
16	68-11608-00	Angle, Belt Tension	1
17	34-00931-10	Screw, Hex Head, 5/16-18 x 1-1/4 lg, Grade 9	4
18	34-00672-00	Key, Square, 3/16 x 1-1/4 lg	1
19	34-00616-00	Washer, Special <b>Prior to S/N DAS90257514</b>	1
20	40-00129-02	Elbow, 1/4 mpt x 1/4 fpt (NSI) <b>Prior to S/N DAS90257514</b>	1
21	34-00559-08	Bolt, Hex Head, 3/8-24 x 1 lg, Grade 8 -- SAE	1
22	34-01241-20	Bolt, Hex Head, M8 x 20 mm	6
23	34-00945-08	Washer, Lock, M8	6
NS	--	Clutch -- <b>NDM</b> -- Refer to Section AUCUN LIEN	1
24	34-00676-40	Bolt, Cap Hex Head, 5/8-18 x 5 lg, Grade 8	2
25	34-00890-07	Washer, Snubbing, 1/8 thick	8
26	73-00160-00	Shockmount	4
27	48-00273-00	Spacer	2
28	PL	Washer, Plain, 5/8	4
29	34-00927-00	Nut, Self Lock, 5/8-18 UNF	4
30	34-00676-36	Bolt, Cap Hex Head, 5/8-18 x 4-1/2 lg, Grade 8	2
31	--	Filter, Fuel -- Refer to Section AUCUN LIEN	1
32	34-00962-25	Screw, Cap Hex Head, M12 x 25 mm	1
33	34-00945-12	Washer, Lock, M12	1
34	34-00944-12	Washer, Plain, M12	1
35	34-00918-06	Screw, Machine, Hex Head, 1/4-20 x 3/4 lg w/cap washer, Grade 5	4
36	86-04043-00	Bracket, Solenoid	1
36	86-02932-00	Bracket, Solenoid -- <b>NDA94D</b>	1
37	NLO	Solenoid, Speed Control <b>Prior to S/N DAW90272802</b> -- Includes:	1
NS	10-00361-20	Boot, Solenoid	1
NS	10-00361-21	Plunger Assembly -- Includes:	1
NS	10-00361-22	Eye Bolt, Solenoid	1
NS	22-50078-01SV	Connector, Male, Sealed	1
NS	22-50078-02SV	Connector, Female (Located on Unit Harness)	1
37	10-00361-00	Solenoid, Speed Control <b>Starting with S/N DAW90272802</b> -- Includes:	1
NS	10-00361-20	Boot	1
NS	10-00361-21	Plunger Assembly -- Includes:	1
NS	10-00361-24	Boot, Plunger	1
NS	10-00361-22	Clevis	1
NS	22-50078-01SV	Connector, Male, Sealed	1
38	44-01049-01	Clevis Clip, Control Rod	1
39	73-00321-00SV	Linkage, Rod Control -- Includes:	1
40	44-01049-01	Clevis Clip, Control Rod	1

# NDA-93A/94A/94D/NDM-94A/94D

## DRIVE ASSEMBLY



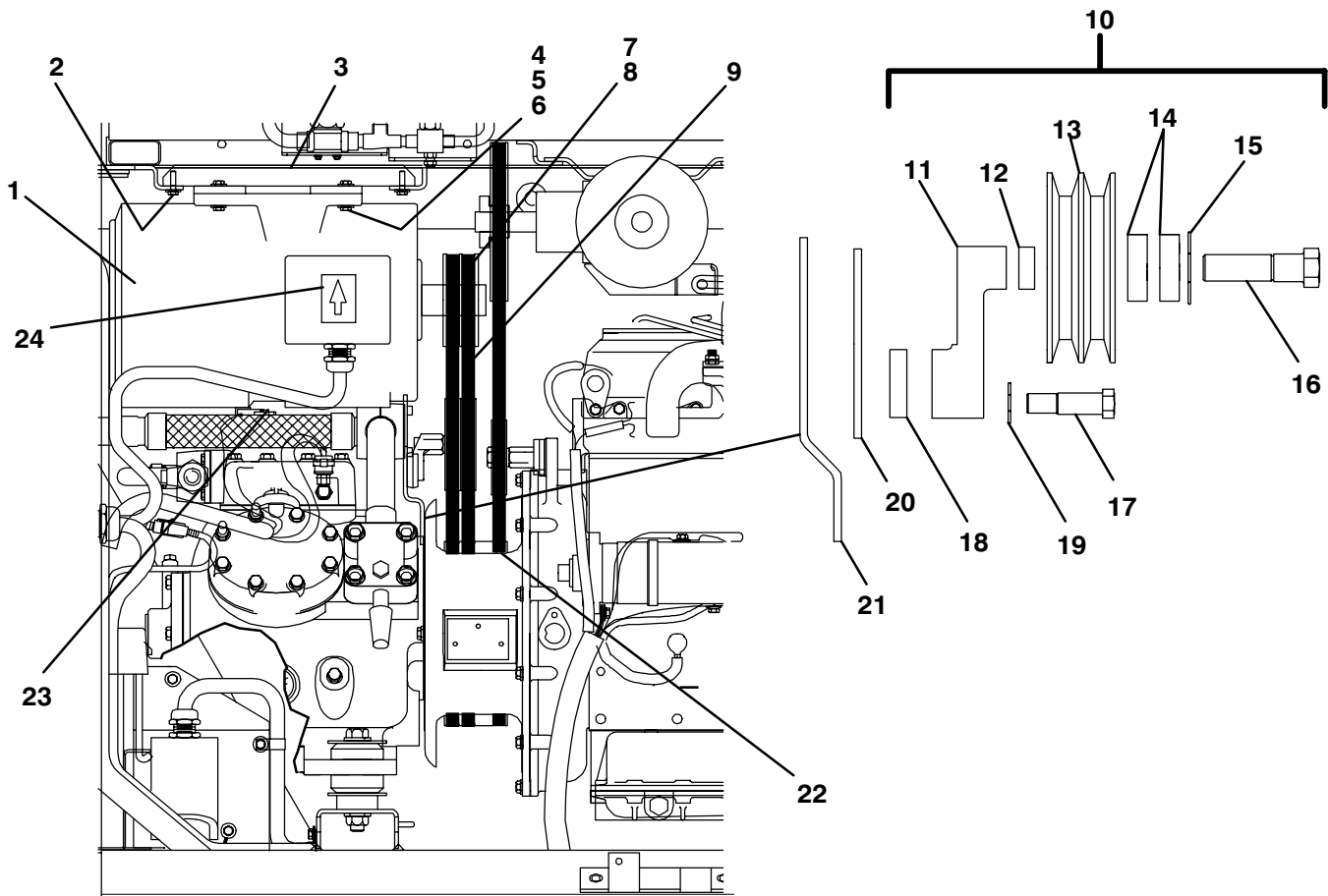
# NDA-93A/94A/94D/NDM-94A/94D

ITEM	PART NO.	DESCRIPTION	QTY
<b>DRIVE ASSEMBLY (CONTINUED)</b>			
41	18-00059-103RM	Compressor, 05G, 41 CFM -- <b>NDA94A, NDA94D</b>	1
41	18-00051-00	Compressor, 05G, 37 CFM -- <b>NDA94A Euro (NSI)</b>	1
41	18-00059-106RM	Compressor, 05G, 37 CFM -- <b>NDM94A, NDM94D</b>	1
41	18-00059-105	Compressor, 05G, 41 CFM -- <b>NDA93A (R-404A)</b>	1
42	17-44025-00	Flange, Shaft End	1
43	26-00101-01	Engine, Kubota, (CT4-134-TV-Ultra) -- <b>NDA/M93A/94A</b>	1
43	26-00105-02	Engine, Kubota, (CT4-134-DI-Ultra) -- <b>NDA/M94D</b>	1
44	12-00309-01	Switch, High Pressure Cut Out (HP-1) -- <b>NDA94A</b> <b>(Prior to S/N EAD90304846)</b>	1
44	12-00309-02	Switch, High Pressure Cut Out (HP-1) -- <b>NDA93A/94D</b> <b>(Starting with S/N EAD90304846)</b>	1
45	12-00255-02	Switch, Head Pressure Control (HP-2)	1
46	79-00965	Snubber	1
47	40-00102-03	Elbow, 1/4 Flare x 1/8 npt	1
48	40-00121-01	Bushing, 1/4 npt x 1/8 npt	1
49	12-00283-00	Transducer, Suction Pressure (SPT)	1
50	12-00284-00	Sensor, Compressor Discharge Temperature (CDT)	1
NS	--	Thermistor, Water Temperature -- Refer to Section AUCUN LIEN	1
51	68-11807-00	Strap, Idler Mounting -- <b>NDM94A</b>	1
51	68-11557-00	Strap, Idler Mounting -- <b>NDM94D</b>	1
52	PL	Washer, Lock, 5/16	2
53	PL	Washer, Plain, 5/16	2
54	34-00304-12	Screw, Hex Head Cap, 3/8-16 x 1-1/2 lg, Grade 5 (NSI)	2
55	34-00304-10	Screw, Hex Head Cap, 3/8-16 x 1-1/4 lg, Grade 5 <b>Units with Bypass Oil Filter (NSI)</b>	2
56	34-00302-10	Screw, Hex Head, 5/16-18 x 1-1/4 SAE lg, Grade 5 (NSI)	2
NS	40-00435-04	Plug, Sq Hd, 1/2-14 npt (in coolant temperature port on engine) (NSI)	1
57	34-00944-08	Washer, Plain, M8	2
58	34-00944-10	Washer, Plain, M10	4
59	25-39135-00	Starter	1
60	25-39170-03	Solenoid, Fuel -- Includes:	1
NS	NSS	Solenoid, Fuel	1
NS	25-39171-00	Gasket	1
61	25-35384	Bolt, Hex Head, M8 x 1.25 x 20 mm lg	2
62	34-00309-12	Screw, Hex Head, 1/2-20 x 1.50 lg	1
63	34-00368-15	Lockwasher, 1/2	1
64	06DA403844	Valve, Schrader	1
NS	86-04148-00	Bracket Assembly, Suction	1

# NDA-93A/94A/94D/NDM-94A/94D

ITEM	PART NO.	DESCRIPTION	QTY
------	----------	-------------	-----

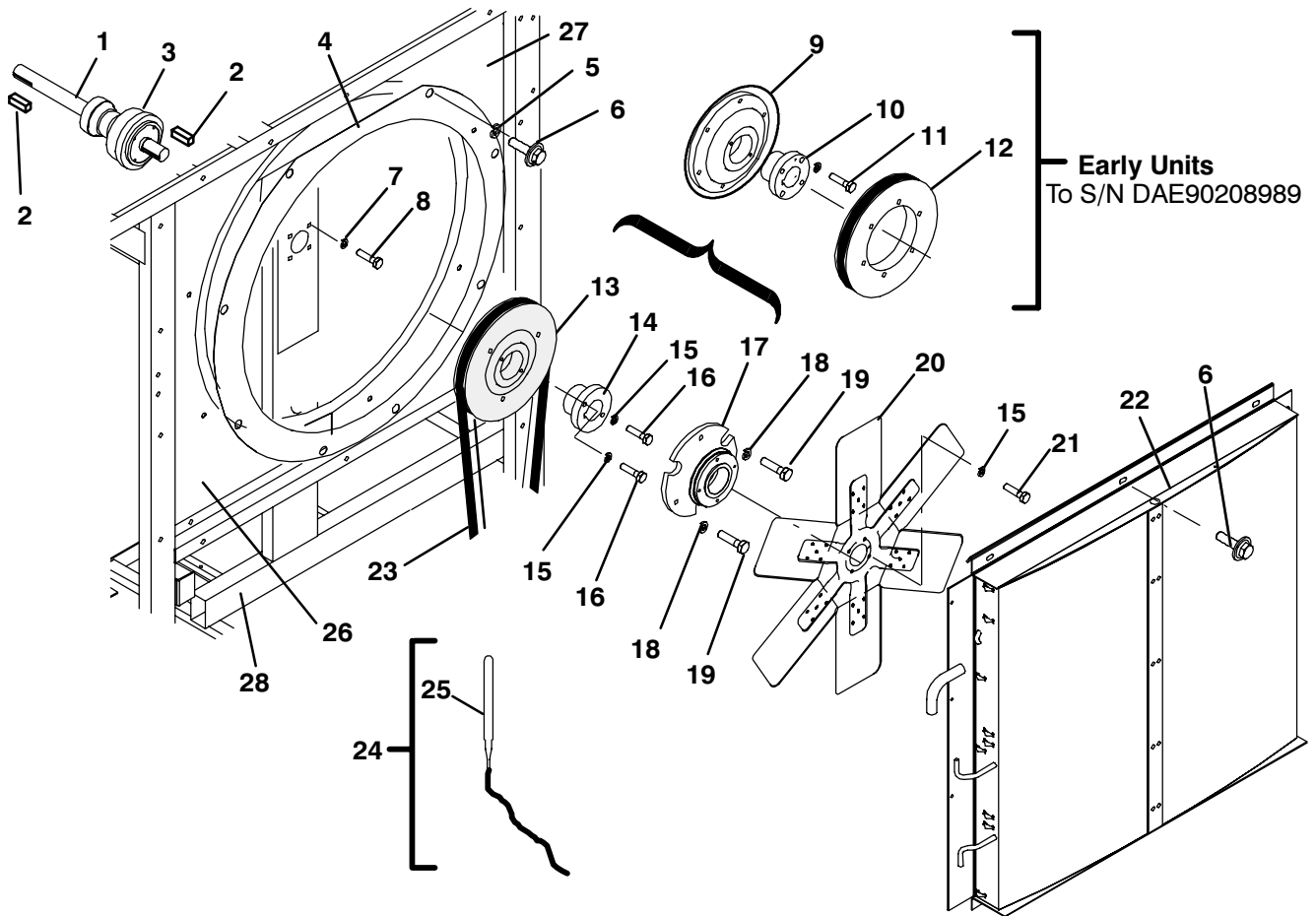
STANDBY MOTOR AND IDLER -- NDM ONLY



1	54-00501-01	Motor	1
2	PL	Screw, Hex Head w/cap washer, 5/16-18 x 1 lg, Grade 5	4
3	86-04059-00	Bracket Assembly	1
4	34-00304-16	Screw, Cap, Hex Head, 3/8-16 x 2 lg, Grade 5 (NSI)	4
5	PL	Washer, Plain, 3/8	4
6	PL	Washer, Lock, 3/8	4
7	50-00189-00	Sheave	1
8	04-00049-00	Bushing, Hub	1
9	50-00178-51	V-Belt (Matched Set)	2
10	48-01039-00	Idler Assembly -- Includes:	1
11	NSS	Bracket, Idler	1
12	48-01039-21	Spacer	1
13	48-01039-22	Pulley, Idler	1
14	48-01039-23	Bearing	2
15	48-01039-24	Snap Ring	1
16	48-01039-25	Shoulder Bolt	1
17	48-01039-26	Shoulder Bolt	1
18	48-01039-27	Spacer	1
19	PL	Washer, Lock, 1/2	1
20	68-11807-00	Mounting Strap	1
21	--	Bracket -- Refer to Section AUCUN LIEN	--
22	--	V-Belt, Compressor Drive -- Refer to Section AUCUN LIEN	--
23	PL	Screw, Cap, Hex Head, 3/8-16 x 1/2 lg, Grade 5	1
24	62-01251-00	Decal, Rotation (NSI)	1

# NDA-93A/94A/94D/NDM-94A/94D

## CONDENSER AND FAN SHAFT ASSEMBLY

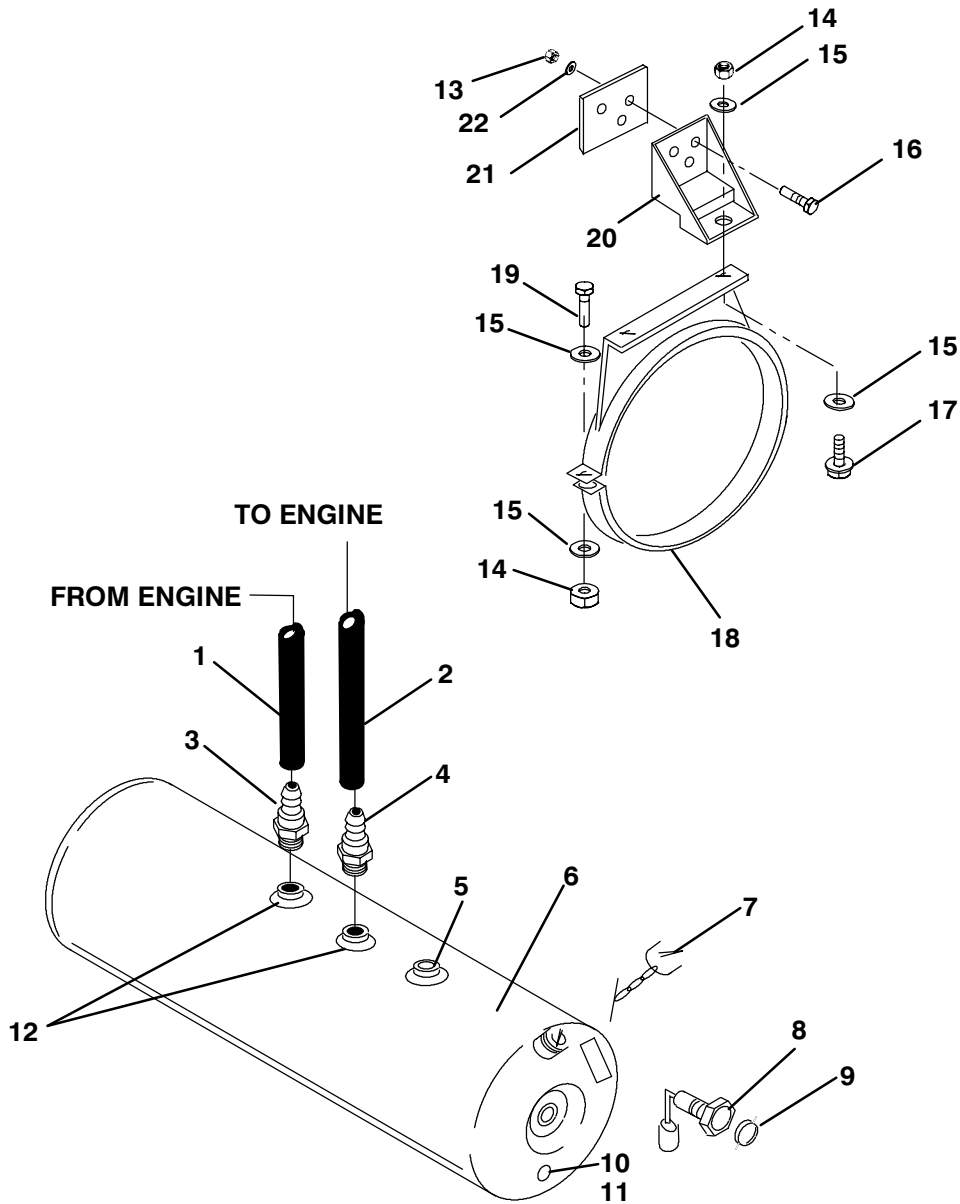


1	50-01148-00SV	Shaft Bearing Assembly -- Includes:	1
2	34-01110	Key, Fan Shaft, 1/4 Square x 1-1/2 -- SST	2
3	58-04098-00	Gasket, Shaft Bearing Assembly <b>Prior to S/N DAF90213555</b>	1
4	68-07224-00	Ring, Venturi, Fan	1
5	34-00699-03	Washer (Special) (NSI)	8
6	34-00918-06	Screw, Hex Head, 1/4-20 x 3/4 lg w/cap washer	A/R
7	PL	Washer, Lock, 3/8	4
8	34-00304-10	Screw, Hex Head, 3/8-16 x 1-1/4 lg, Grade 5 (NSI)	4
9	NLO	Flange, Shaft -- <b>Early Units</b>	1
10	04-00122-12	Bushing, Split Taper -- <b>Early Units</b> -- Includes:	1
11	PL	Screw, Hex Head, 1/4-20 x 1 lg -- SAE Grade 5	2
12	48-00272-00	Sheave, Fan -- <b>Early Units</b>	1
13	50-01140-00	Sheave, Fan -- <b>Starting with S/N DAE90208989</b>	1
14	04-00122-02	Bushing, Split Taper -- <b>Starting with S/N DAE90208989</b>	1
15	PL	Washer, Lock, 1/4 -- <b>Starting with S/N DAE90208989</b>	A/R
16	PL	Screw, Hx Hd, 1/4-20 x 1/4 lg, Grade 5 -- <b>Starting with S/N DAE90208989</b>	2
17	48-00265-00	Adapter, Fan-- <b>Starting with S/N DAE90208989</b>	1
18	PL	Washer, Lock 5/16	3
19	34-00302-10	Screw, Hex Head, 5/16-18 x 1-1/4 lg, Grade 5 (NSI)	3
20	38-00520-00	Fan, Condenser	1
21	34-00300-06	Screw, Cap Hex Head, 1/4-20 x 3/4 lg, Grade 5 (NSI)	4
22	08-00206-00	Coil Assembly, Condenser	1
23	50-00178-07	V-Belt, Condenser Fan	1
24	22-01637-00	Sensor Assembly, Ambient -- Includes:	1
25	12-01104-04	Sensor	1
NS	22-50078-01SV	Connector, Male	1
NS	22-50078-02SV	Connector, Female (Located on Unit Harness)	1
26	79-02255-00	Shroud Assembly -- <b>Curbside</b>	1
27	79-02255-01	Shroud Assembly -- <b>Roadside</b>	1
28	79-02287-00	Frame Assembly, Condenser	1

# NDA-93A/94A/94D/NDM-94A/94D

ITEM	PART NO.	DESCRIPTION	QTY
------	----------	-------------	-----

FUEL PUMP AND TANK



1	58-00507-00F50	Tubing, 1/4 OD (50 ft, to be cut to length)	A/R
2	58-00580-00F50	Tubing, 3/8 OD (50 ft, to be cut to length)	A/R
3	40-00450-00	Connector, 1/4 mpt x 1/4 Tube (Special)	1
4	40-00450-01	Connector, 1/4 mpt x 3/8 Tube (Special)	1
5	40-00437-00	Vent, Fuel	1
6	65-00113-00	Tank, Fuel, <b>50 gal. -- 18" Dia (Single End Fill)</b> (NSI)	1
7	44-00046-08	Cap and Chain ( <b>Vented type</b> )	1
7	44-00046-01	Cap and Chain ( <b>Non-Vented type</b> )	1

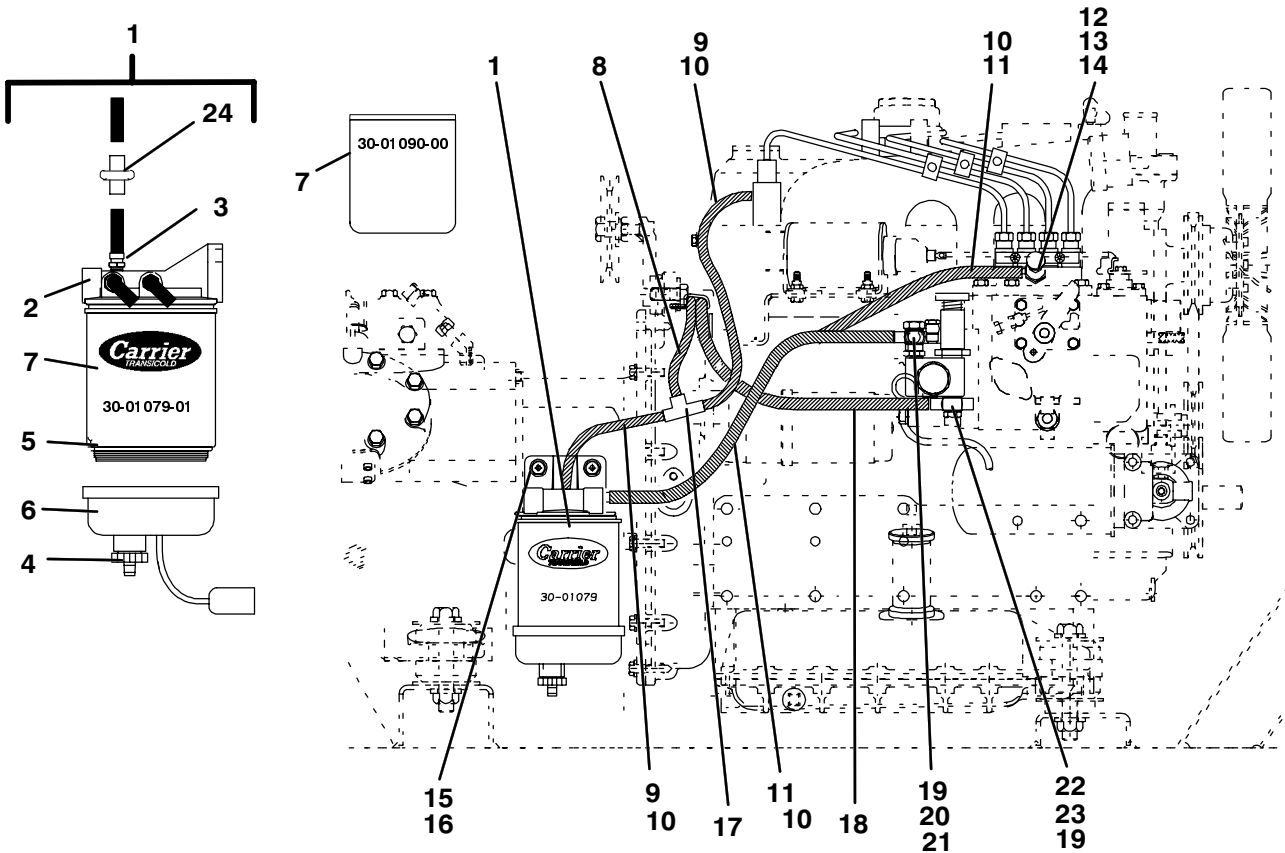
# NDA-93A/94A/94D/NDM-94A/94D

ITEM	PART NO.	DESCRIPTION	QTY
<b>FUEL PUMP AND TANK</b>			
8	012-00104-99	Fuel Gauge (with float arm) -- Includes:	1
9	2-00104-03	Dial, Fuel Gauge	1
10	81-00961	Drain <b>(on tanks so equipped)</b>	2
11	PL	Plug, Pipe, 1/4 npt	2
12	65-01053-02	Tube Assembly (Pick-up and return) for 22" Dia Tank)	2
13	PL	Locknut, 3/8 -- SST	A/R
14	PL	Locknut, 1/2-13 -- SST	A/R
15	34-00699-14	Washer, Special -- SST	A/R
16	34-00559-14	Bolt, Hex Head, 3/8-24 x 1-3/4 -- SST	A/R
17	PL	Bolt, Hex Head, 1/2-13 x 1-1/2 -- SST	A/R
18	79-00916-06	Strap Assembly, <b>50 gal. Tank -- 18" Dia</b>	2
19	PL	Bolt, Hex Head, 1/2-13 x 3-3/4 -- SST	A/R
20	68-03811	Bracket, Offset Hanger (Style D)	A/R
21	68-03812	Plate, Back-up (Used with style D hanger bracket)	A/R
22	PL	Washer, Flat, 3/8 -- SST	A/R
NS	40-00117-01	Drain Cock, Sump -- 1/4 npt	1

# NDA-93A/94A/94D/NDM-94A/94D

ITEM	PART NO.	DESCRIPTION	QTY
------	----------	-------------	-----

## FUEL FILTER



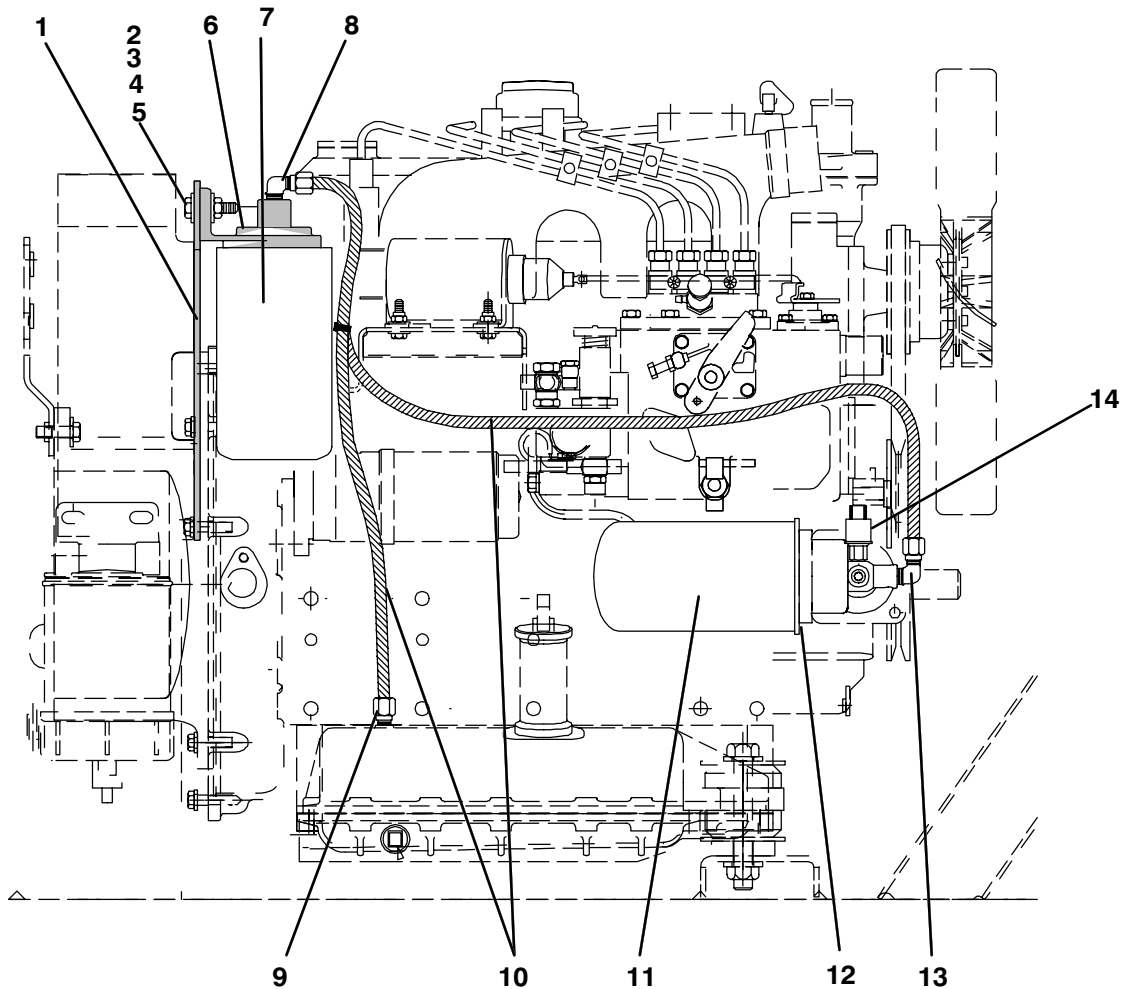
1	30-01089-00	Filter Assembly, Fuel (NSI) -- Includes:	1
1	30-01089-01	Filter Assembly, Fuel -- With Heater -- Optional (NSI) -- Includes:	1
2	30-00405-02	Head, Fuel Includes:	1
NS	30-01088-30	Nipple, Filter	1
3	30-01088-37	Fitting, Orifice (Fuel Bleed)	1
4	30-01078-03	Plug, Drain	1
5	30-01089-27	Gasket, Bowl	1
6	30-01088-33	Bowl, Fuel -- <b>Without Heater</b>	1
6	30-01088-35	Bowl, Fuel -- <b>With Heater</b> -- Includes:	1
NS	NSS	Heater	1
NS	30-01078-08	O-Ring, Heater	1
7	30-01079-01	Filter, Fuel -- <b>Prior to S/N DAW90273677 (Bowl required)</b>	1
7	30-01090-00	Filter, Fuel -- <b>Starting with S/N DAW90273677 (Bowl not required)</b>	1
8	58-00507-00F50	Tube, Nylon (Black), 1/4 OD (50 ft to be cut to length)	A/R
9	58-00659-00F25	Tube, Nylon, 3/16 ID (25 ft to be cut to length)	A/R
10	44-00045-25	Clamp, Worm (Range -- 3/16 to 5/8 OD)	A/R
11	58-01251-00F25	Tube, 5/16 ID (25 ft to be cut to length)	A/R
12	25-37594	Banjo, Injection Pump	1
13	25-37588-00	Bolt, Banjo	1
14	25-37589	Seal, Banjo	2
15	34-00944-10	Washer, Plain, M10 (NSI)	2
16	34-00304-10	Screw, Cap Hex Head, 3/8-16 x 1-1/4 lg, Grade 5 (NSI)	2
17	40-01156-00	Tee, 3/16 ID Hose x 1/4 Tube	1
18	58-00580-00F50	Tube, .375 OD (50 ft to be cut to length)	A/R
19	42-01133-00	Seal, Banjo, M14	4
20	25-37594	Banjo, Fuel Pump (Outlet)	1
21	25-38666-14	Bolt, Banjo	1
22	40-01153-00	Banjo, Fuel Pump (Inlet)	1
23	25-38666-12	Bolt, Banjo	1
24	30-50017-00	Orifice, Fuel Bleed, Replaceable (Located in bleed line)	1



# NDA-93A/94A/94D/NDM-94A/94D

ITEM	PART NO.	DESCRIPTION	QTY
------	----------	-------------	-----

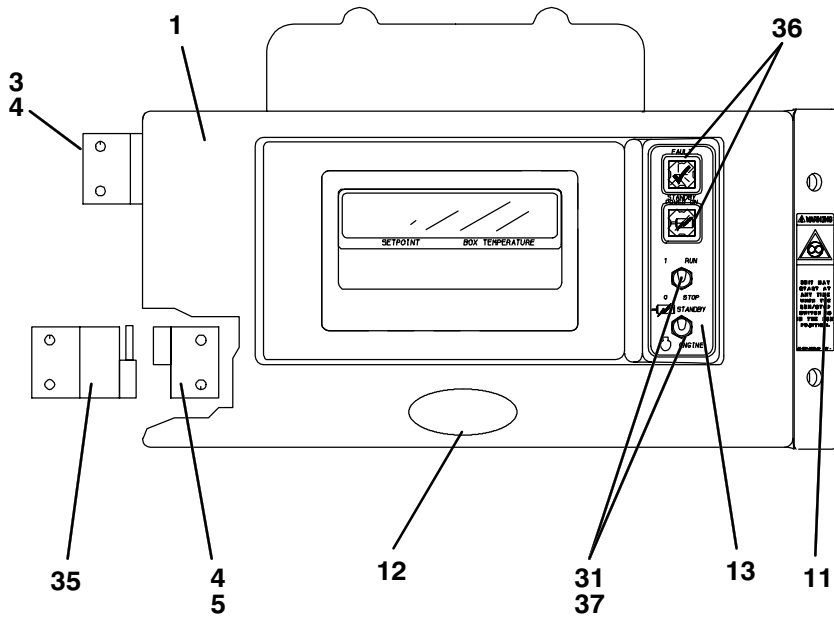
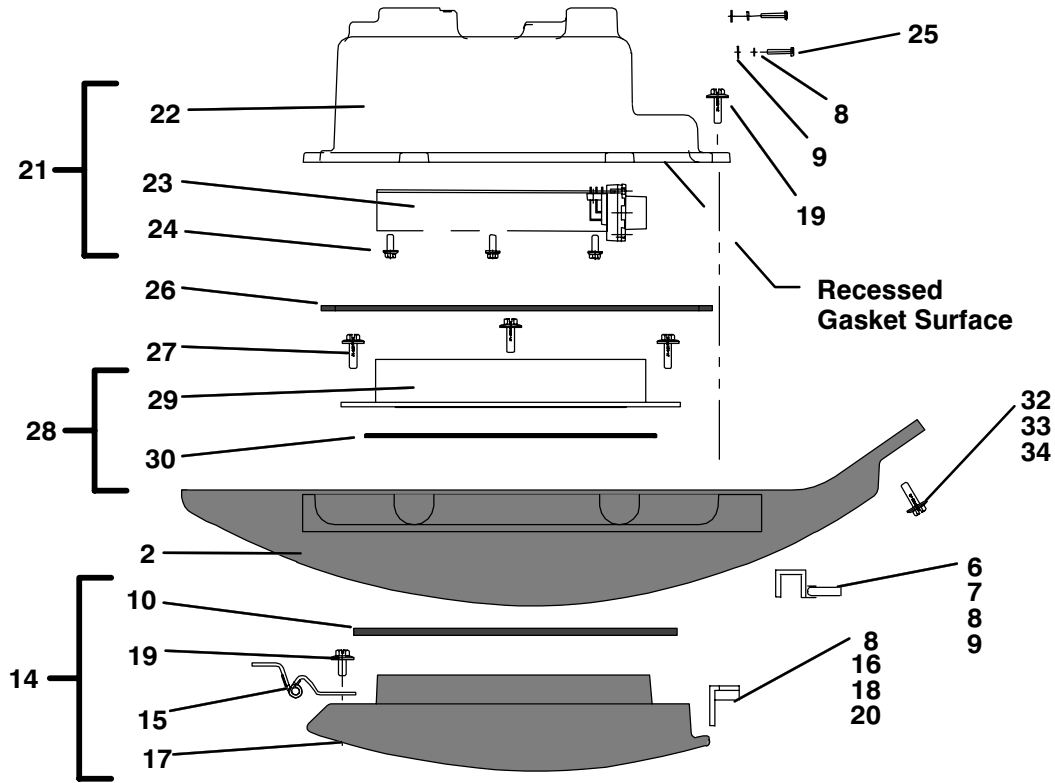
## OIL FILTER AND BY-PASS OIL FILTER ASSEMBLIES



1	86-04056-00	Bracket Assembly, Mounting (Filter Head)	1
2	34-00300-10	Screw, Hex Head, 1/4-20 x 1-1/4, Grade 5 (NSI)	3
3	PL	Washer, Plain, 1/4 SAE	6
4	PL	Washer, Lock, 1/4	3
5	PL	Nut, Hex, 1/4-20	3
6	30-00325	Head, Oil Filter	1
7	30-00304	Filter, Oil (By-Pass)	1
8	40-00342-03	Elbow, Male, 3/8 Tube x 1/4 npt	2
9	40-00507-00	Connector, Male, 3/8 Tube x M12 x 1-1/2	1
10	58-00580-00F50	Tube, .375 OD (50 ft cut to length)	A/R
11	30-00323-00	Filter, Oil	1
12	25-37150	Adapter (For 30-00323-00 Filter)	1
13	40-00342-02	Elbow, Male, 3/8 Tube x 1/8 npt	1
14	12-00310-00	Switch, Oil Pressure	1
NS	22-50078-02SV	Connector, Female (Located on unit harness) (Mating part for oil pressure switch)	A/R

# NDA-93A/94A/94D/NDM-94A/94D

MICROPROCESSOR ASSEMBLY -- STARTING WITH S/N CAY90178292



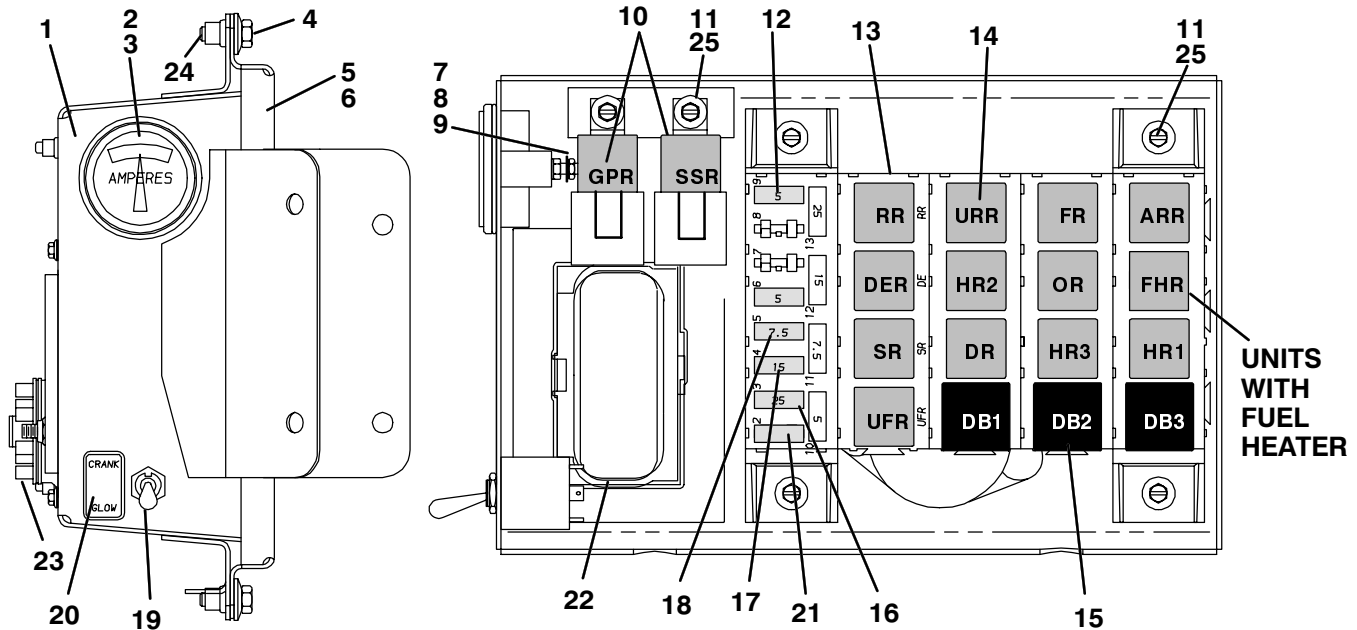
# NDA-93A/94A/94D/NDM-94A/94D

ITEM	PART NO.	DESCRIPTION	QTY
<b>MICROPROCESSOR ASSEMBLY -- STARTING WITH S/N CAY90178292</b>			
--	91-00281-12	Box Assembly, Control -- <b>NDA</b> -- Includes: (NSI)	1
--	91-00281-13	Box Assembly, Control -- <b>NDM</b> -- Includes: (NSI)	1
1	79-01658-21	Door Assembly, Control -- Includes:	1
2	NSS	Door, Control	1
3	44-00334-00	Hinge Assembly, Door (Upper)	1
4	34-00918-06	Screw, Hex Head, 1/4-20 x 3/4 lg w/cap washer -- SAE	4
5	44-00333-00	Hinge, Male	1
6	44-00340-02	Latch, Door	1
7	34-06126-06	Screw, Hex Head, #4-40 x 3/8 lg -- SST	2
8	34-00662-05	Washer, Plain #4 -- SST	4
9	34-00663-05	Washer, Lock #4 -- SST	2
10	42-00267-00	Gasket, Keypad Door	1
11	62-02450-00	Decal, Warning (Auto Start)	1
NS	58-00660-00	Washer, Condensate Drain	1
12	62-02487-07	Decal, Carrier	1
13	62-02448-00	Decal, Switch -- <b>NDA</b>	1
13	62-02448-01	Decal, Switch -- <b>NDM</b> (NSI)	1
14	79-01658-20	Door Assembly, Keypad -- Includes:	1
8	34-00662-05	Washer, Plain #4 -- SST	4
15	44-00351-00	Hinge, Keypad Door	1
16	34-00667-05	Nut, Lock #4-40 -- SST	1
17	NSS	Door, Keypad	1
18	44-00340-01	Door Latch, Keypad	1
19	34-00917-08	Screw, Hex Head, #10-32 x 1/2 lg w/cap washer -- SAE	2
20	34-06126-08	Screw, Hex Head, #4-40 x 1/2 lg -- SST	2
NS	62-02449-00	Label, Operating Instructions (NSI)	1
21	91-00281-45	Logic Board Assembly (New) -- Includes:	1
8	34-00662-05	Washer, Plain, #4 -- SST	6
9	34-00663-05	Washer, Lock, #4 -- SST	6
22	NSS	Cover, Control -- <b>Recessed Gasket Surface</b>	1
23	NSS	Board, Logic	1
24	34-00996-06	Screw, Hex Head, #8-32 x 3/8 lg w/cap washer (NSI)	8
25	34-06126-10	Screw, Hex Head, #4-40 x 5/8 lg -- SST	6
26	42-00266-00	Gasket, Cover (Micro)	1
27	34-00917-08	Screw, Hex Head, #10-32 x 1/2 lg w/cap washer -- SAE	16
28	12-00307-00SV	Display Assembly, Key Pad -- Includes:	1
29	NSS	Display Assembly, Keypad	1
30	42-00251-00	O-Ring (Display Assembly)	1
NS	22-01641-00	Cable Assembly Ribbon	1
31	10-00327-00	Switch, Toggle	A/R
32	34-01226-00	Washer, Retaining, Nylon	2
NS	22-50100-00	Pin, Female (Used on unit harness mating logic board plug)	A/R
33	34-06089-00	Washer, Fender, Black	2
34	34-06025-08	Screw, Hex Head, #10-32 x 1 lg w/cap washer -- SAE	2
35	44-00333-01	Hinge, Female	1
36	22-01467-00	Lamp, Wedge Base	2
37	58-04128-00	Boot (NSI)	A/R

# NDA-93A/94A/94D/NDM-94A/94D

ITEM	PART NO.	DESCRIPTION	QTY
------	----------	-------------	-----

## RELAY BOX ASSEMBLY -- PRIOR TO S/N DAF90209264

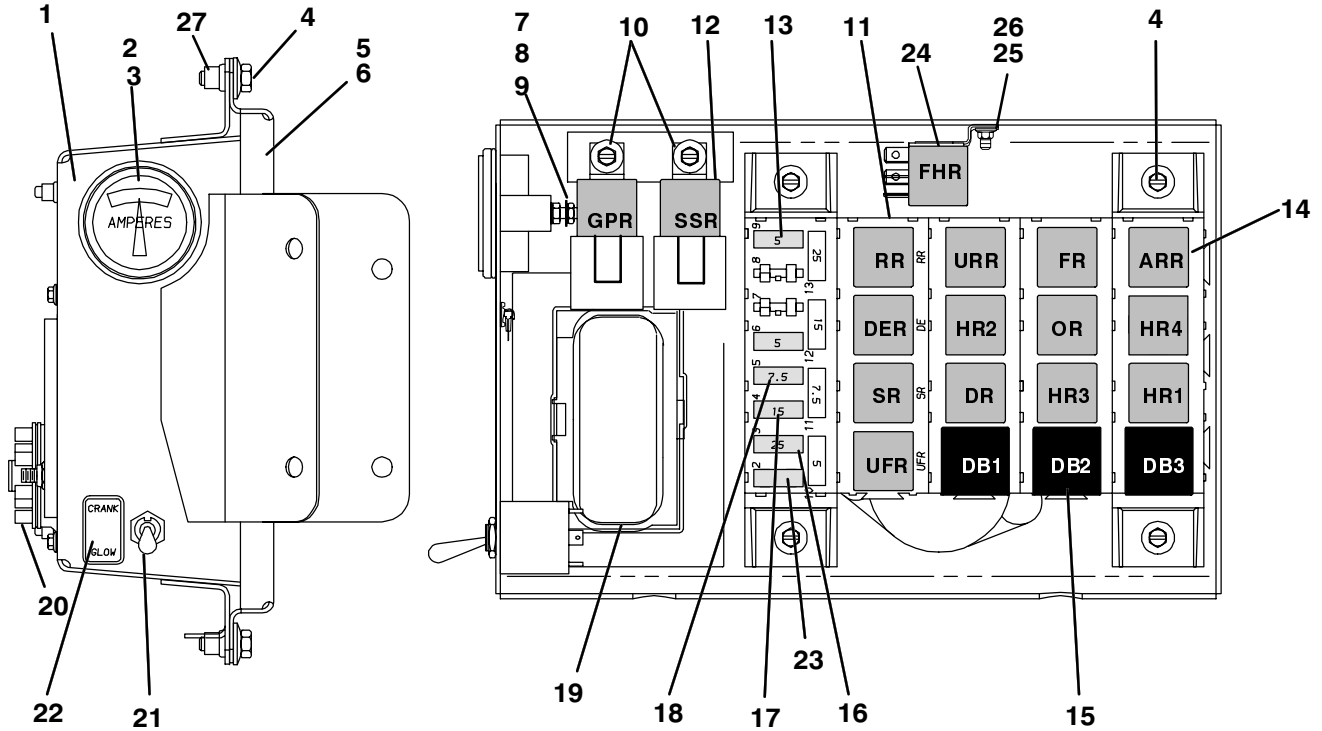


--	91-00263-00	Relay Box Assembly -- <b>Units Without Fuel Heater</b> -- Includes:	
--	91-00263-01	Relay Box Assembly -- <b>Units With Fuel Heater (NSI)</b> -- Includes:	
1	86-04039-00	Box Assembly, Relay (NSI)	1
2	22-00538-01	Ammeter, +60/- -60 amps	1
3	42-00045-01	O-Ring, 1.987 ID	1
4	34-00918-06	Screw, Machine Hex Head, 1/4-20 x 3/4 w/cap washer	4
5	68-11580-00	Cover, Box (NSI)	1
6	42-00254-00	Gasket, Cover	1
7	PL	Nut, #10-32 -- Brass	2
8	PL	Washer, Plain, #10 -- Brass	2
9	34-00938-09	Washer, Lock, #10 -- Brass	2
10	10-00328-00	Relay, 70 amp	2
11	PL	Screw, Machine Hex Head, #10-32 x 3/4 w/cap washer	A/R
12	22-02336-02	Fuse, 5 amp	3
13	22-02526-00	Module, Relay	1
14	10-00286-04	Relay, 40 amp	A/R
15	10-00319-00	Diode, Block (12 Volt)	3
16	22-02336-05	Fuse, 25 amp	2
17	22-02336-06	Fuse, 15 amp	2
18	22-02336-08	Fuse, 7.5 amp	2
19	10-01164-10	Switch, Toggle	1
20	62-02454-00	Decal, Switch (NSI)	1
21	22-02336-01	Fuse, 20 amp -- <b>Units With Fuel Heater</b>	1
NS	22-02336-09	Fuse, 80 amp	1
NS	22-02338-00	Fuse Holder (10-12 AWG Wire) -- <b>Units With Fuel Heater</b>	1
NS	22-02338-01	Fuse Holder (14-18 AWG Wire) -- <b>Units With Fuel Heater</b>	1
NS	22-02336-04	Fuse, 10 amp -- <b>Units With Electric Fuel Pump</b>	1
NS	22-50079-00	Fuse Holder, 80 amp	1
22	22-50078-11	Connector, Female (36 Pin) <b>(HC)</b> (NSI)	1
23	22-01565-00	Connector, Female (22 Pin) <b>(HC2)</b> (NSI)	1
24	34-06051-06	Rivnut, 1/4-20	4
25	34-06051-04	Rivnut, #10-32	6

# NDA-93A/94A/94D/NDM-94A/94D

ITEM	PART NO.	DESCRIPTION	QTY
------	----------	-------------	-----

## RELAY BOX ASSEMBLY -- STARTING WITH S/N DAF90209264

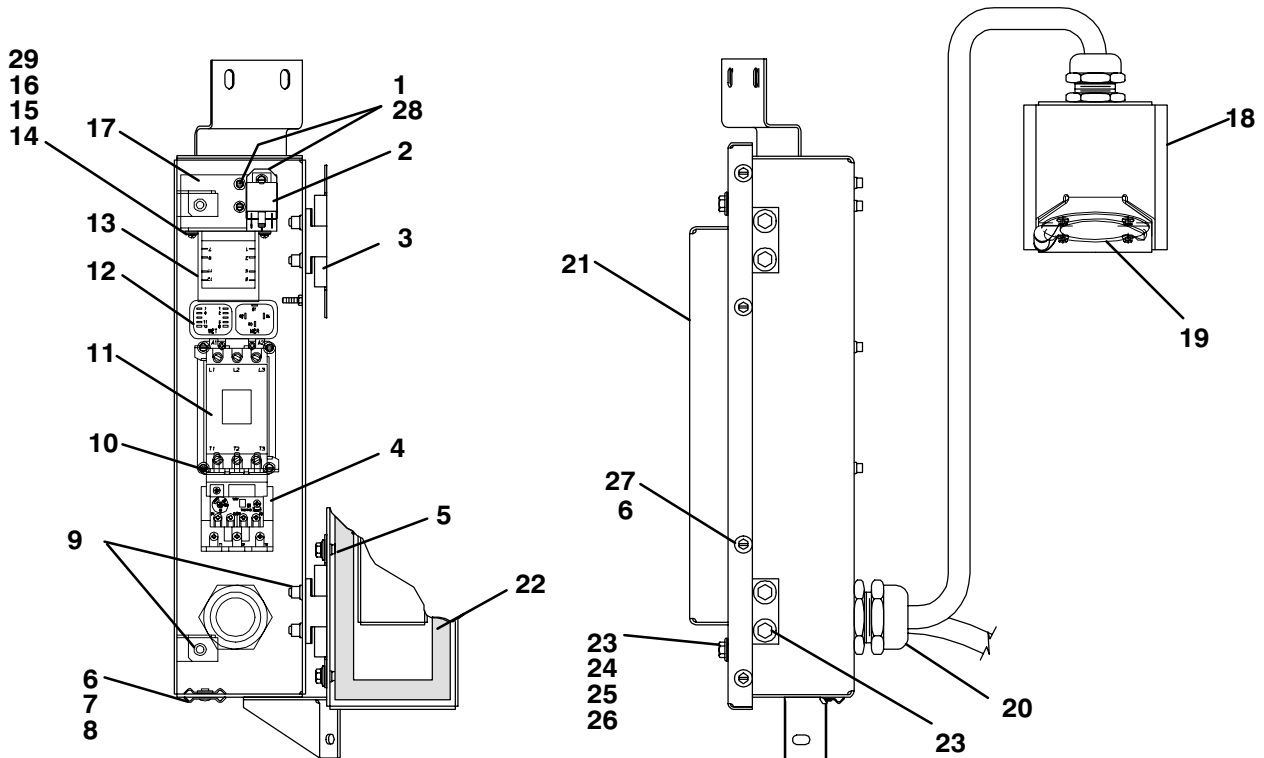


--	91-00263-06	Relay Box Assembly -- <b>Units Without Fuel Heater (NSI)</b> -- Includes:	
--	91-00263-07	Relay Box Assembly -- <b>Units With Fuel Heater (NSI)</b> -- Includes:	
1	86-04039-01	Box Assembly, Relay (NSI)	1
2	22-00538-01	Ammeter, +60/-60 amps	1
3	42-00045-01	O-Ring, 1.987 ID	1
4	34-00918-06	Screw, Machine Hex Head, 1/4-20 x 3/4 w/cap washer	4
5	68-11580-00	Cover, Box (NSI)	1
6	42-00254-00	Gasket, Cover	1
7	PL	Nut, #10-32 -- Brass	2
8	PL	Washer, Plain, #10 -- Brass	2
9	34-00938-09	Washer, Lock, #10 -- Brass	2
10	PL	Screw, Machine Hex Head, #10-32 x 3/4 w/cap washer	A/R
11	22-01688-00	Module, Relay (NSI)	1
12	10-00328-00	Relay, 70 amp	2
13	22-02336-02	Fuse, 5 amp	3
14	10-00286-04	Relay, 40 amp	12
15	10-00319-00	Diode, Block (12 Volt)	3
16	22-02336-05	Fuse, 25 amp	2
17	22-02336-06	Fuse, 15 amp	2
18	22-02336-08	Fuse, 7.5 amp	2
NS	22-02336-09	Fuse, 80 amp	1
NS	22-50079-00	Fuse Holder, 80 amp	1
19	22-50078-11	Connector, Female (36 Pin) <b>(HC)</b> (NSI)	1
20	22-01565-00	Connector, Female (22 Pin) <b>(HC2)</b> (NSI)	1
21	10-01164-10	Switch, Toggle	1
22	62-02454-00	Decal, Switch (NSI)	1
23	22-02336-01	Fuse, 20 amp -- <b>Units With Fuel Heater</b>	1
24	10-00286-03	Relay -- <b>Units With Fuel Heater</b>	1
NS	22-02338-00	Fuse Holder (10-12 AWG Wire) -- <b>Units With Fuel Heater</b>	1
NS	22-02338-01	Fuse Holder (14-18 AWG Wire) -- <b>Units With Fuel Heater</b>	1
25	PL	Nut, Lock, #10-32	1
26	PL	Washer, Plain, #10	1
27	34-06051-06	Rivnut, 1/4-20	4
28	34-06051-04	Rivnut, #10-32	6
NS	22-02336-04	Fuse, 10 amp -- <b>Units With Electric Fuel Pump</b>	1

# NDA-93A/94A/94D/NDM-94A/94D

ITEM	PART NO.	DESCRIPTION	QTY
------	----------	-------------	-----

## STANDBY BOX ASSEMBLY -- 230 VOLT

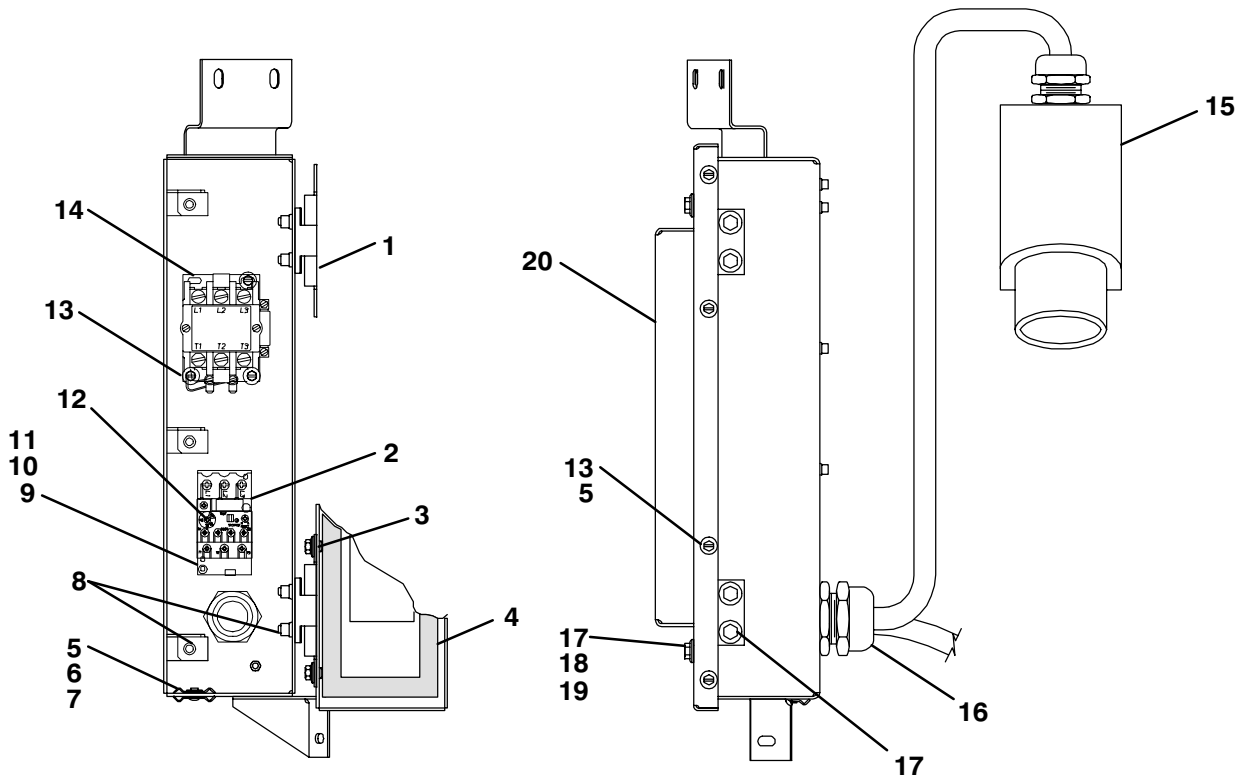


--	91-00267-01	Box Assembly (230 Volt, 60 Hz) (NSI) -- Includes:	
1	34-00996-08	Screw, Hex Head, #8-32 x 1/2 lg w/cap washer (NSI)	7
2	10-00286-00	Relay	1
3	44-00342-00	Hinge	1
4	10-00335-00	Relay, Overload	1
5	34-00360-09	Nut, Lock, #10-32 (NSI)	4
6	PL	Washer, Plain, #10	5
7	PL	Rivet, Blind .188 Dia, .062-.250 Grip Range	1
8	58-00660-00	Washer, Plastic, Condensate Drain	2
9	34-06051-06	Rivnut, 1/4-20	6
10	34-00996-16	Screw, Hex Head, #8-32 x 1 lg w/cap washer (NSI)	4
11	10-00334-00	Contactora, 45 amp, a pole	1
12	62-02511-00	Decal (NSI)	1
13	10-00356-00	Transformer, Dual Voltage	1
14	PL	Washer, Plain, #6	2
15	PL	Washer, Lock, #6	2
16	PL	Screw, Round Head, #6-32 x 1/2 lg	2
17	68-11811-00	Bracket (NSI)	1
18	86-04070-00	Box Assembly, 230 Volt Plug	1
19	22-01132-03	Receptacle (Female) 250 volt, 50 amp, 3 phase	1
20	22-01695-00	Harness, Standby (230v) (NSI)	1
21	79-01662-00	Door Assembly -- Includes:	1
22	42-00268-00	Gasket, Door (NSI)	1
23	34-00918-06	Screw, Hex Head, 1/4-20 x 3/4 lg w/cap washer -- SAE	A/R
24	34-01226-00	Washer, Retaining, Nylon	2
25	58-00511-09	Washer, Flat, Nylon	2
26	58-00916-00	Washer, Rubber	2
27	PL	Screw, Hex Head, #10-32 x 3/4 lg w/cap washer -- SAE	4
28	34-06051-01	Rivnut, #8-32 (NSI)	A/R
29	34-06051-00	Rivnut, #6-32 (NSI)	2
NS	22-01131-03	Plug, Female, 250 volts, 50 amps, 3 phase	1
NS	62-02506-01	Decal, Danger (NSI)	1
NS	62-02255-00	Decal, Voltage (NSI)	1
NS	42-00282-00	Gasket, 230 Volt Plug	1

# NDA-93A/94A/94D/NDM-94A/94D

ITEM	PART NO.	DESCRIPTION	QTY
------	----------	-------------	-----

**STANDBY BOX ASSEMBLY -- 380 VOLT**

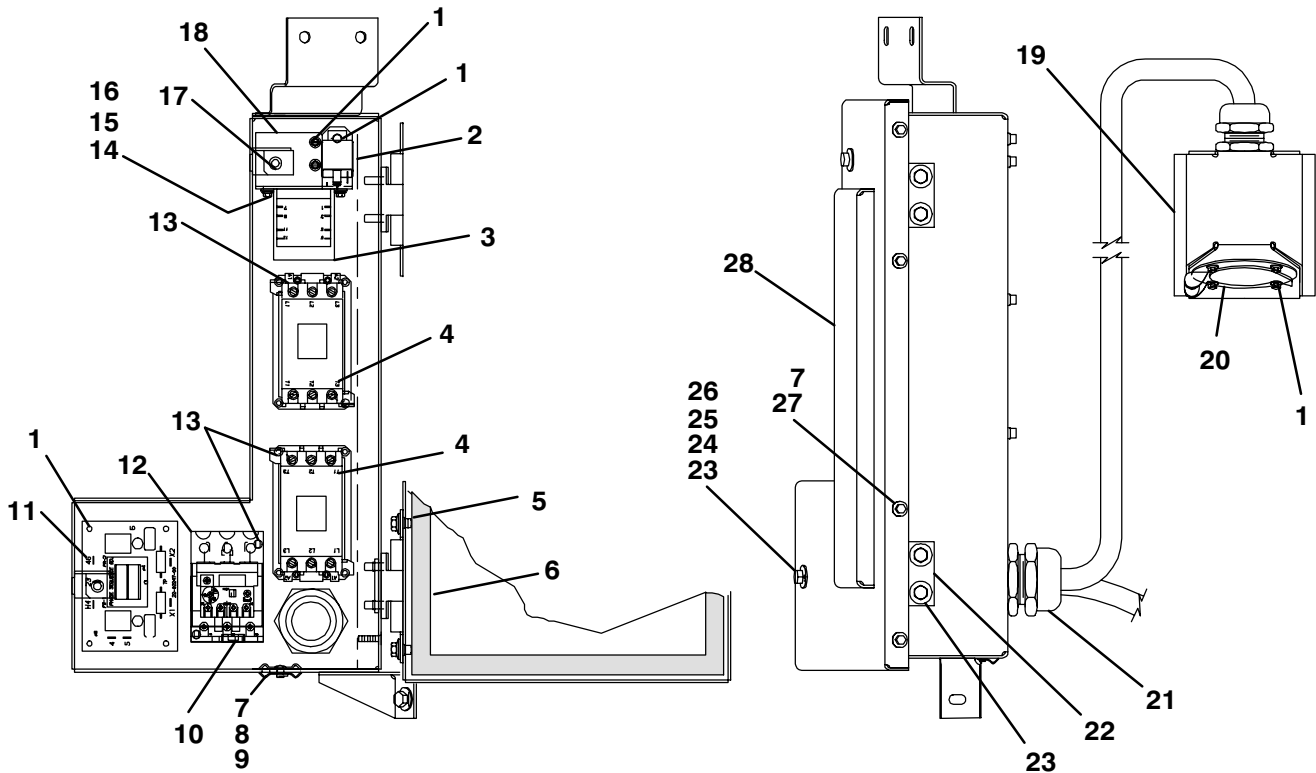


--	91-00266-01	Box Assembly (380 Volt, 50 hz) (NSI) -- Includes:	
1	44-00342-00	Hinge	2
2	10-00351-00	Relay Overload Base	1
3	34-00360-09	Nut, Lock, #10-32 (NSI)	4
4	42-00268-00	Gasket, Door (NSI)	1
5	PL	Washer, Plain, #10	5
6	PL	Rivet, Blind .188 Dia, .062-.250 Grip Range	1
7	58-00660-00	Washer, Plastic, Condensate Drain	2
8	34-06051-06	Rivnut, 1/4-20	6
9	PL	Washer, Plain, #4	2
10	PL	Screw, Round Head, #4-40 x 7/8 lg	2
11	PL	Washer, Lock, #4	2
12	10-00350-00	Relay, Overload	1
13	34-00917-12	Screw, Hex Head, #10-32 x 3/4 lg w/cap washer -- SAE (NSI)	7
14	10-00279-00	Contactor, 40 amp, 4 pole	1
15	22-01658-00	Plug, Power, 380-3-50 hz (NSI)	1
16	22-01686-00	Harness, Standby (380v) (NSI)	1
17	34-00918-06	Screw, Hex Head, 1/4-20 x 3/4 lg w/cap washer -- SAE	7
18	58-00511-09	Washer, Flat, Nylon	2
19	58-00916-00	Washer, Rubber	2
20	68-11662-00	Door (NSI)	1
NS	22-01513-00	Plug	1
NS	62-02506-00	Decal, Danger (NSI)	1
NS	62-02255-01	Decal, Voltage (NSI)	1
NS	22-01659-00	Cap, Seal, 380 Volt Plug (NSI)	1

# NDA-93A/94A/94D/NDM-94A/94D

ITEM	PART NO.	DESCRIPTION	QTY
------	----------	-------------	-----

**STANDBY BOX ASSEMBLY -- 200 & 230 VOLT PHASE REVERSAL**



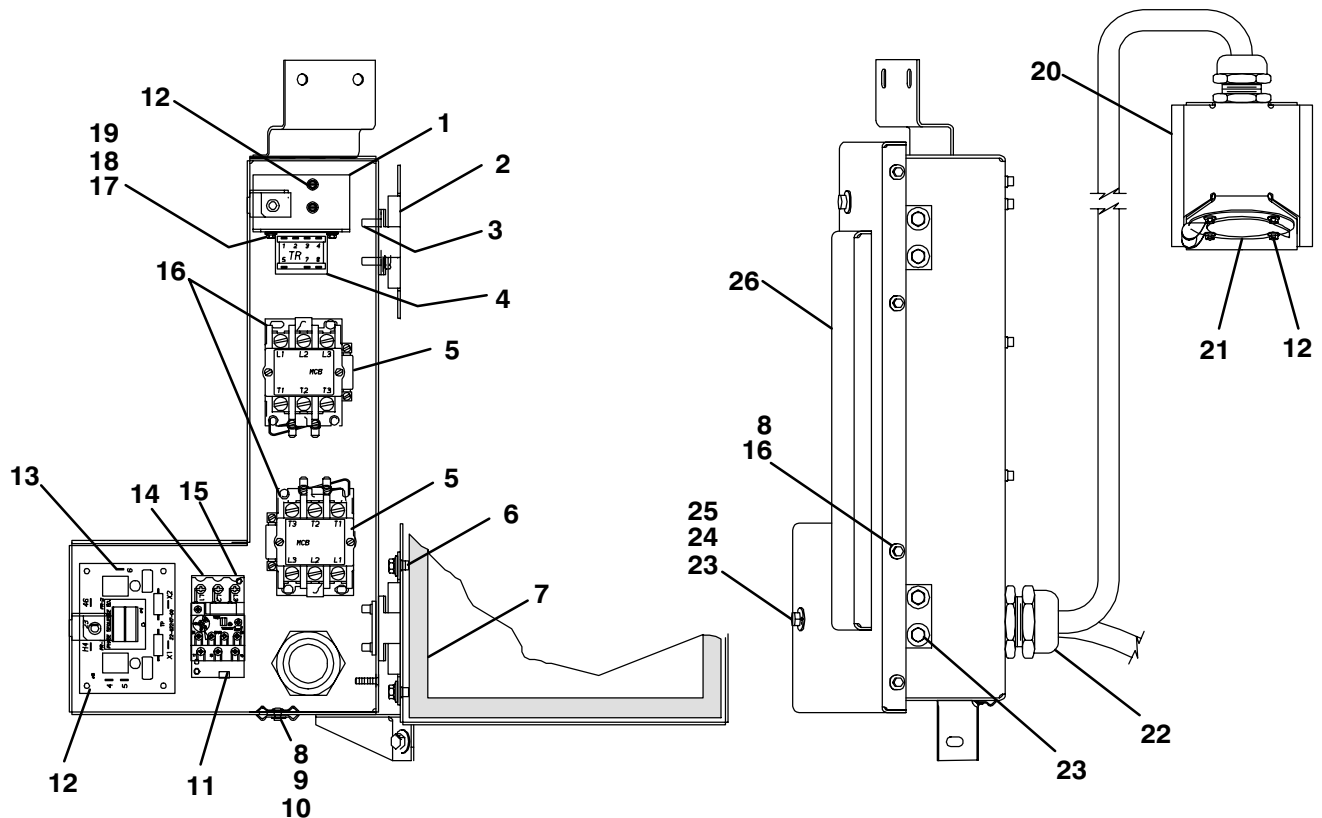
--	91-00269-01	Box Assembly (230 Volt Phase Reversal, Std) (NSI) -- Includes:	
--	91-00269-02	Box Assembly (200 Volt Phase Reversal, Special) (NSI) -- Includes:	
1	34-00996-08	Screw, Hex Head, #8-32 x 1/2 lg w/cap washer (NSI)	11
2	10-00286-00	Relay	1
NS	62-02511-00	Decal (MCR/TR) (NSI)	1
3	10-00356-00	Transformer, Dual Voltage	1
4	10-00334-00	Contactor, 45 amp, 4 pole	2
5	34-00360-09	Nut, Lock, #10-32 (NSI)	4
6	42-00284-00	Gasket, Door (NSI)	1
7	PL	Washer, Plain, #10	5
8	PL	Rivet, Blind .188 Dia, .062-.250 Grip Range	1
9	58-00660-00	Washer, Plastic, Condensate Drain	2
10	10-00335-00	Relay Overload Base	1
11	22-02247	Circuit Board, Phase Reversal	1
12	10-00341-00	Relay, Overload	1
13	34-00996-16	Screw, Hex Head, #8-32 x 1 lg w/cap washer (NSI)	4
14	PL	Screw, Round Head, #6-32 x 1/2 lg	2
15	PL	Washer, Lock, #6	2
16	PL	Washer, Plain, #6	2
17	34-06051-06	Rivnut, 1/4-20	6
18	68-11681-00	Bracket (NSI)	1
19	86-04070-00	Box Assembly	1
20	22-01658-00	Connector Assembly, 250 volt, 50 amp, 3 phase (NSI)	1
21	22-01671-00	Harness, Phase Reversal/Standby (230v) (NSI)	1
22	44-00342-00	Hinge	2
23	34-00918-06	Screw, Hex Head, 1/4-20 x 3/4 lg w/cap washer -- SAE	6
24	34-01226-00	Washer, Retaining, Nylon	2
25	58-00511-09	Washer, Flat, Nylon	2
26	58-00916-00	Washer, Rubber	2
27	34-00917-12	Screw, Hex Head, #10-32 x 3/4 lg w/cap washer -- SAE (NSI)	4
28	86-04087-00	Door Assembly (NSI)	1
NS	42-00282-00	Gasket, 230 Volt Plug	1



# NDA-93A/94A/94D/NDM-94A/94D

ITEM	PART NO.	DESCRIPTION	QTY
------	----------	-------------	-----

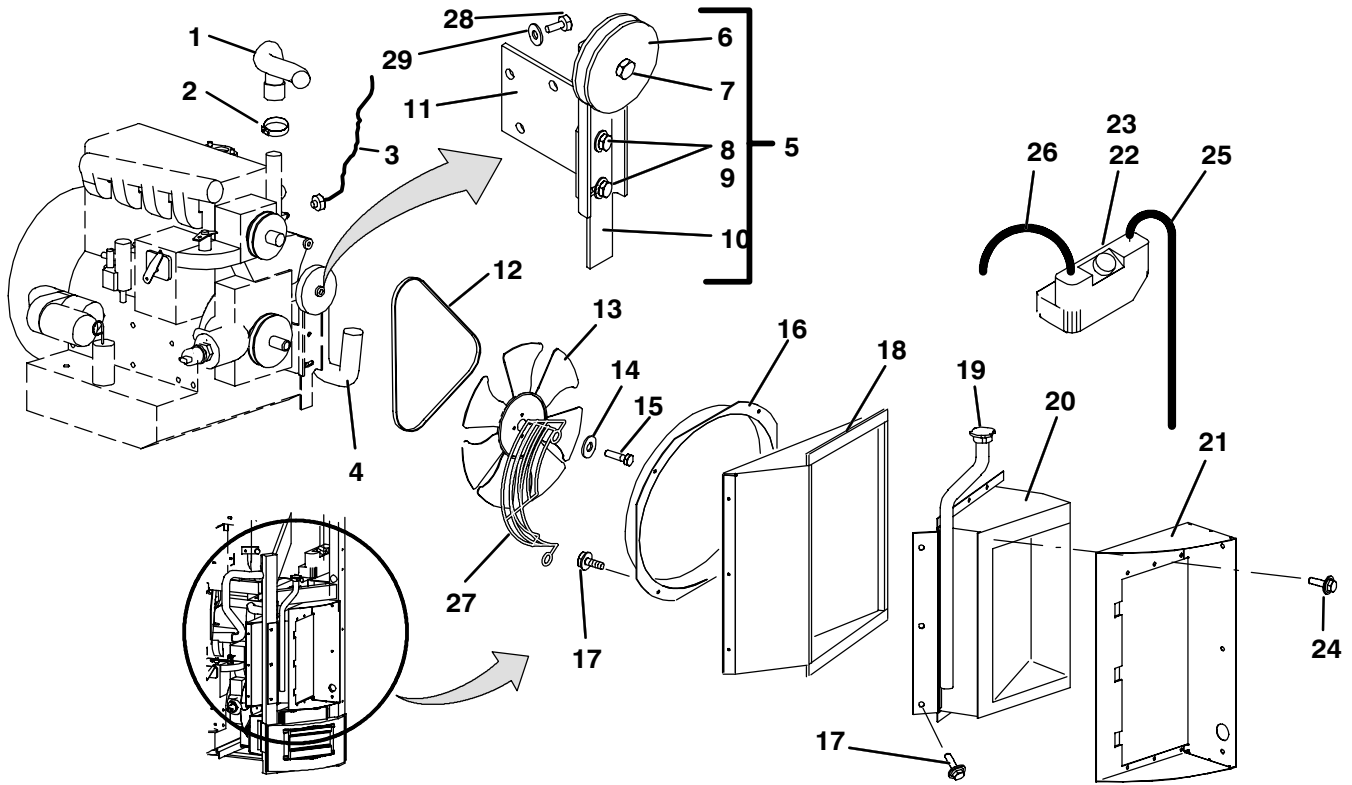
## STANDBY BOX ASSEMBLY -- 380 VOLT PHASE REVERSAL



--	91-00272-00	Box Assembly (380 Volt Phase Reversal) (NSI) -- Includes:	
1	68-11779-00	Bracket (NSI)	1
2	44-00342-00	Hinge	2
3	34-06051-06	Rivnut, 1/4-20	6
4	10-00283-00	Transformer, Dual Voltage	1
5	10-00279-00	Contactors, 40 amp, 4 pole	2
6	34-00360-09	Nut, Lock, #10-32 (NSI)	4
7	42-00284-00	Gasket, Door (NSI)	1
8	PL	Washer, Plain, #10	5
9	PL	Rivet, Blind .188 Dia, .062-.250 Grip Range	1
10	58-00660-00	Washer, Plastic, Condensate Drain	2
11	10-00350-00	Relay, Overload	1
12	34-00996-08	Screw, Hex Head, #8-32 x 1/2 lg w/cap washer (NSI)	10
13	22-02247	Circuit Board, Phase Reversal	1
14	10-00351-00	Relay Overload Base	1
15	PL	Screw, Round Head, #4-40 x 7/8 lg	2
16	34-00917-12	Screw, Hex Head, #10-32 x 3/4 lg w/cap washer -- SAE (NSI)	10
17	PL	Screw, Round Head, #6-32 x 1/2 lg	2
18	PL	Washer, Lock, #6	2
19	PL	Washer, Plain, #6	2
20	86-04091-00	Box Assembly (NSI)	1
21	22-01658-00	Connector Assembly, 250 volt, 50 amp, 3 phase (NSI)	1
22	22-01682-00	Harness, Phase Reversal/Standby (380v) (NSI)	1
23	34-00918-06	Screw, Hex Head, 1/4-20 x 3/4 lg w/cap washer -- SAE	6
24	58-00511-09	Washer, Flat, Nylon	2
25	58-00916-00	Washer, Rubber	2
26	86-04100-00	Door Assembly (NSI)	1
NS	62-02574-00	Decal (TR) (NSI)	1
NS	22-01658-00	Plug, 380-3-50HZ (NSI)	1
NS	22-01659-00	Cap, Seal, 380 Volt Plug (NSI)	1

# NDA-93A/94A/94D/NDM-94A/94D

## COOLANT SYSTEM



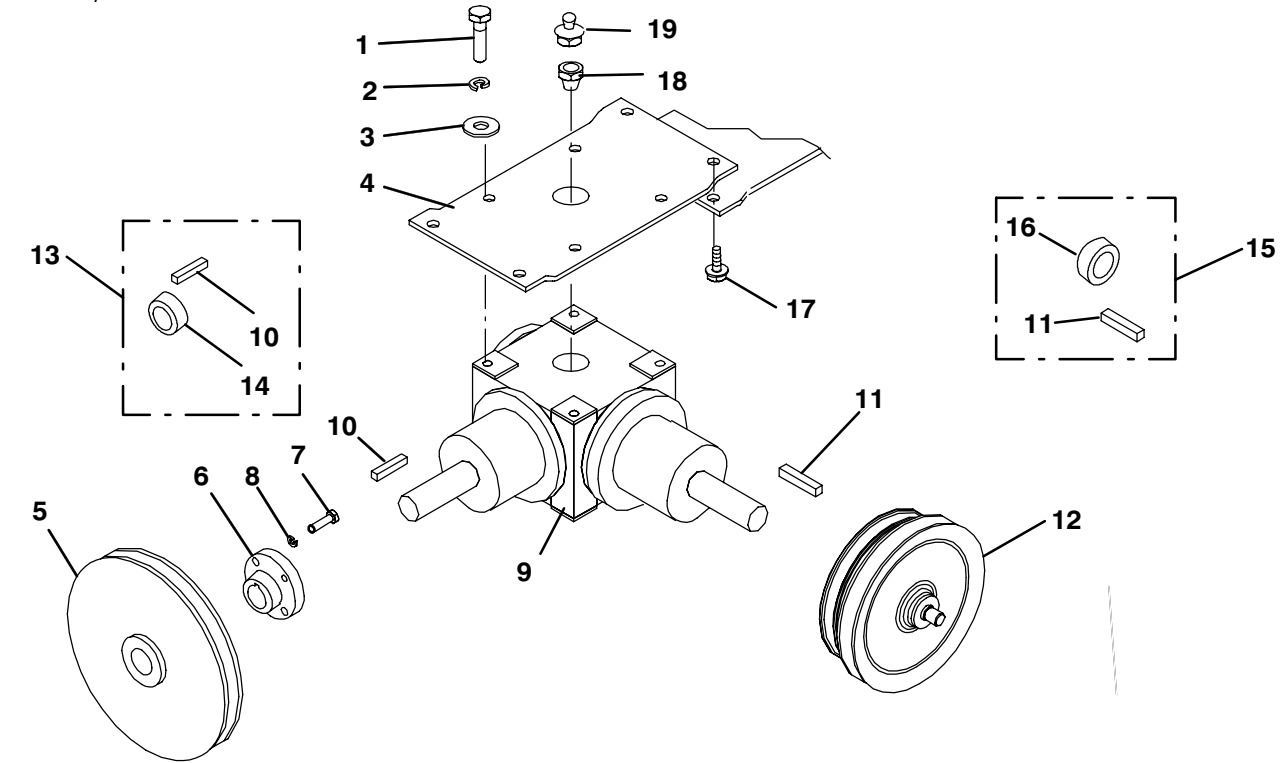
# NDA-93A/94A/94D/NDM-94A/94D

ITEM	PART NO.	DESCRIPTION	QTY
<b>COOLANT SYSTEM</b>			
1	58-04080-00	Hose Radiator, Inlet - - <b>Rubber</b>	1
1	58-04080-01	Hose Radiator, Inlet - - <b>Silicone</b>	1
2	44-00045-03	Clamp, Hose - - <b>Use with rubber hoses</b>	4
2	44-01140-00	Clamp, Hose - - <b>Use with silicone hoses</b>	4
3	12-00312-00	Sensor, Water Temperature	1
4	58-04079-00	Hose, Radiator, Outlet - - <b>Rubber</b>	1
4	58-04079-01	Hose, Radiator, Outlet - - <b>Silicone</b>	1
5	50-00213-00	Idler Assembly, Water Pump - - Includes:	1
6	48-00058-01	Pulley Assembly, Idler - - Includes:	1
NS	04-00018	Bearing	1
NS	NSS	Ring, Retaining	1
NS	48-00058-05	Spacer, Pulley	1
7	48-00058-02	Bolt, Shoulder, 7/16-20	1
8	PL	Screw, Cap Hex Head, 3/8-16 x1	2
9	PL	Washer, Lock, 3/8	2
10	50-00213-04	Lever Assembly	1
11	50-00213-07	Bracket Assembly	1
12	50-00162-04	V-Belt, Water Pump	1
13	38-00152-00	Fan, Radiator Cooling	1
14	34-00945-06	Washer, Lock, M6 Spring (NSI)	4
15	34-00967-25	Screw, Hex Head, M6 x 25 mm (NSI)	4
16	68-11629-00	Orifice, Ring	1
17	34-00918-06	Screw, Machine, Hex Head, 1/4-20 x 3/4 w/cap washer	A/R
18	79-02259-00	Plenum Assembly	1
19	30-00397-00	Cap, Radiator	1
20	08-00181-00	Coil Assembly, Radiator	1
21	79-02263-00	Plenum Assembly	1
22	58-01291-00SV	Bottle, Coolant Recovery - - Includes:	1
23	58-00743	Cap, Radiator Coolant Recovery Bottle	1
NS	68-07144-00	Bracket, Coolant Recovery Bottle (NSI)	1
24	34-06130-00	Screw, Thread Cut, #10-32 x 1/2 (NSI)	6
25	PL	Tube, Clear, 1/8 ID x 49 inches lg	A/R
26	PL	Tube, Clear, 5/16 ID x 16 inches lg	A/R
27	68-11558-00	Guard, Fan	1
28	34-00962-25	Screw, M12 x 25 mm	3
29	34-00945-12	Washer, Lock, M12	3
NS	68-11565-00	Bracket, Coolant Recovery Bottle (NSI)	1

# NDA-93A/94A/94D/NDM-94A/94D

ITEM	PART NO.	DESCRIPTION	QTY
------	----------	-------------	-----

## CLUTCH/GEARBOX ASSEMBLY

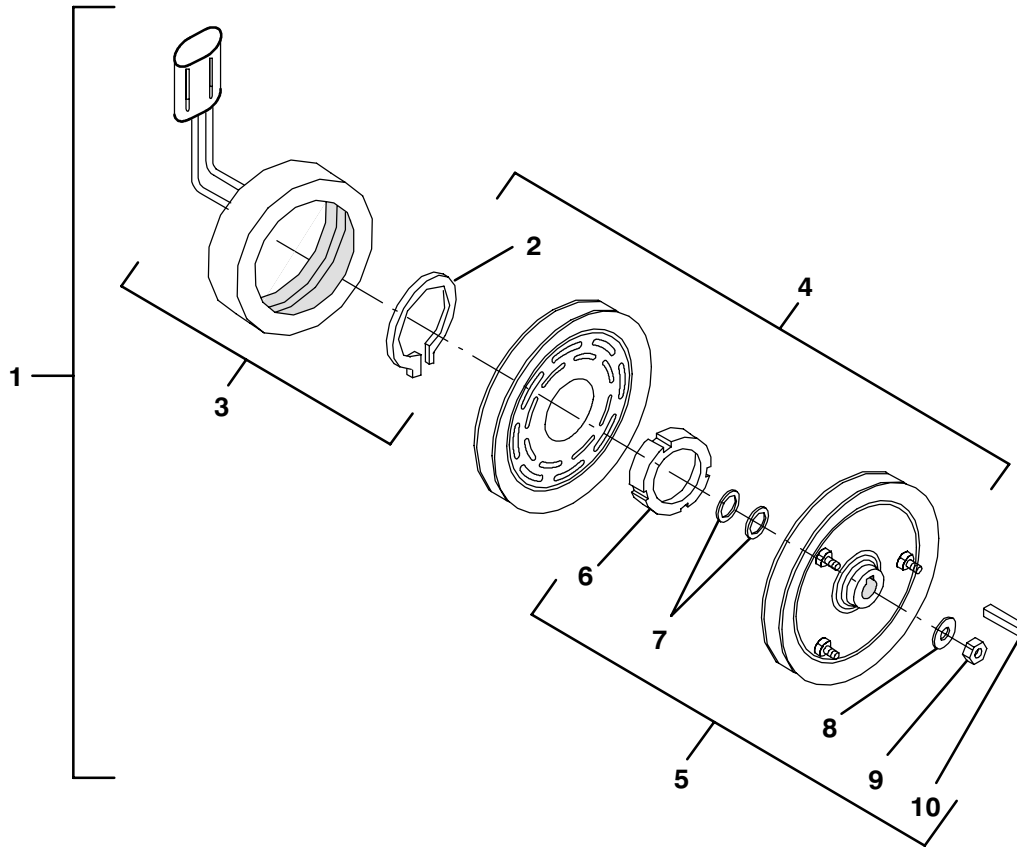


1	34-00304-08	Screw, Hex Head, 3/8-16 x 1 Grade 5	4
2	PL	Washer, Lock, 3/8	4
3	PL	Washer, Plain, 3/8	4
4	86-02798-01	Bracket, Mounting Plate	1
5	50-00212-00	Sheave, Single Groove, 7-3/4" OD (2 bolt) <b>Prior to S/N DAJ90226875</b>	1
6	04-00122-13	Bushing, Split Taper (2 bolt) <b>Prior to S/N DAJ90226875</b> -- Includes:	1
7	PL	Screw, Hex Head, 1/4-20 x 3/4 lg, SAE Grade 5	3
5	50-00224-00	Sheave, Single Groove, 7-3/4" OD (3 bolt)	1
6	04-00058-00	Bushing, Split Taper (3 bolt) <b>Starting with S/N DAJ90226875</b>	1
8	PL	Washer, Lock, 1/4	2
9	50-00214-00	Gearbox Assembly -- Includes:	1
10	34-01110	Key, Shaft, 1/4 Square x 1-1/2 lg	1
NS	50-00214-39	O-Ring 3	
11	34-00672-00	Key, Shaft, 3/16 Square x 5/8 lg (1-1/4 lg, cut to length)	1
12	--	Clutch Assembly -- Refer to Section AUCUN LIEN	1
13	50-00214-38SV	Seal, Shaft (Drive) -- Includes:	1
14	NSS	Seal, Shaft (Drive) -- Refer to Item 13	1
10	34-01110	Key, Shaft, 1/4 Square x 1-1/2 lg(3 lg, cut to length)	1
15	50-00214-44SV	Seal, Shaft (Clutch) -- Includes:	1
16	NSS	Seal, Shaft (Clutch) -- Refer to Item 15	1
11	34-00672-00	Key, Shaft, 3/16 Square x 5/8 lg (1-1/4 lg, cut to length)	1
17	34-00919-08	Screw, Hex Head, 5/16-18 x 1 lg w/cap washer -- SAE Grade 8 (NSI)	4
18	40-00121-01	Bushing	1
19	40-00508-00	Valve, Pressure Relief	2
NS	07-00308-00	Tool, Seal Pilot Sleeve, Special (For Gearbox Clutch Shaft Seal)	--
NS	07-00309-00	Tool, Seal Pilot Sleeve, Special (For Gearbox Drive Shaft Seal)	--
NS	07-00310-00	Tool, Seal Driver, Special (For Gearbox Drive Shaft Seal)	--
NS	07-00311-00	Tool, Seal Driver, Special (For Gearbox Clutch Shaft Seal)	--

# NDA-93A/94A/94D/NDM-94A/94D

ITEM	PART NO.	DESCRIPTION	QTY
------	----------	-------------	-----

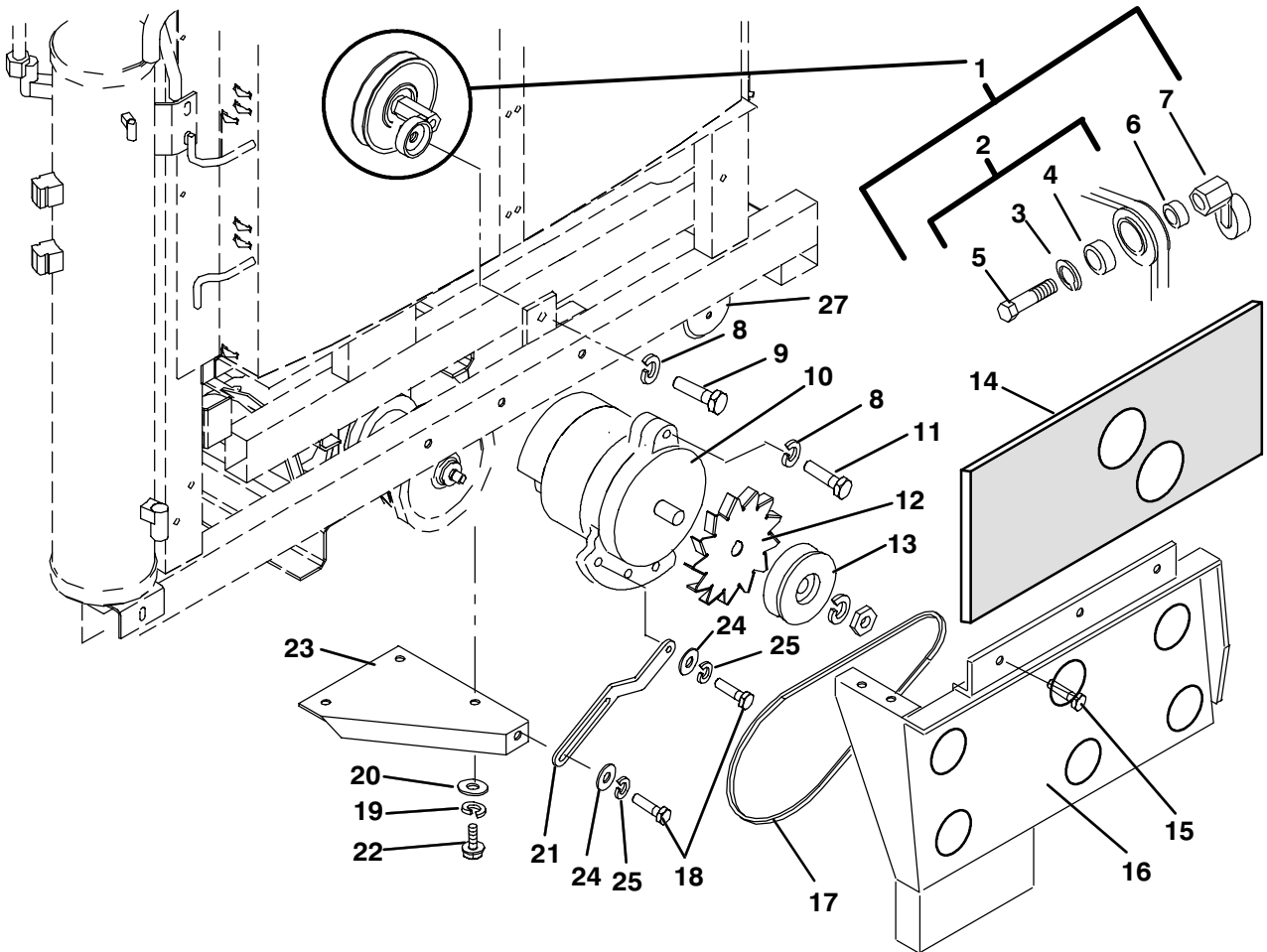
## CLUTCH ASSEMBLY



1	50-00215-01SV	Clutch Assembly -- Includes:	1
2	50-00215-24	Ring, Retaining (External)	1
3	50-00215-25SV	Coil Assembly, Field -- Includes:	1
4	50-00215-21SV	Rotor Assembly with Bearing -- Includes:	1
5	50-00215-23	Package, Accessory -- Includes:	1
6	50-00215-22	Nut, Special (Rotor Retaining)	1
7	NSS	Shim	1
8	NSS	Washer, Flat	1
9	NSS	Nut, Lock (Armature Retaining)	1
10	NSS	Key, Shaft, 3/16 Square x 5/8 lg	1
2	50-00215-24	Ring, Retaining (External)	1
10	34-00672-00	Key, Shaft, 3/16 Square x 5/8 lg (1-1/4 lg, cut to length)	1
NS	07-00303-01	Tool, Nut Wrench, Special (For Removal of Item 6)	--

# NDA-93A/94A/94D/NDM-94A/94D

## ALTERNATOR SECTION AND RELATED COMPONENTS



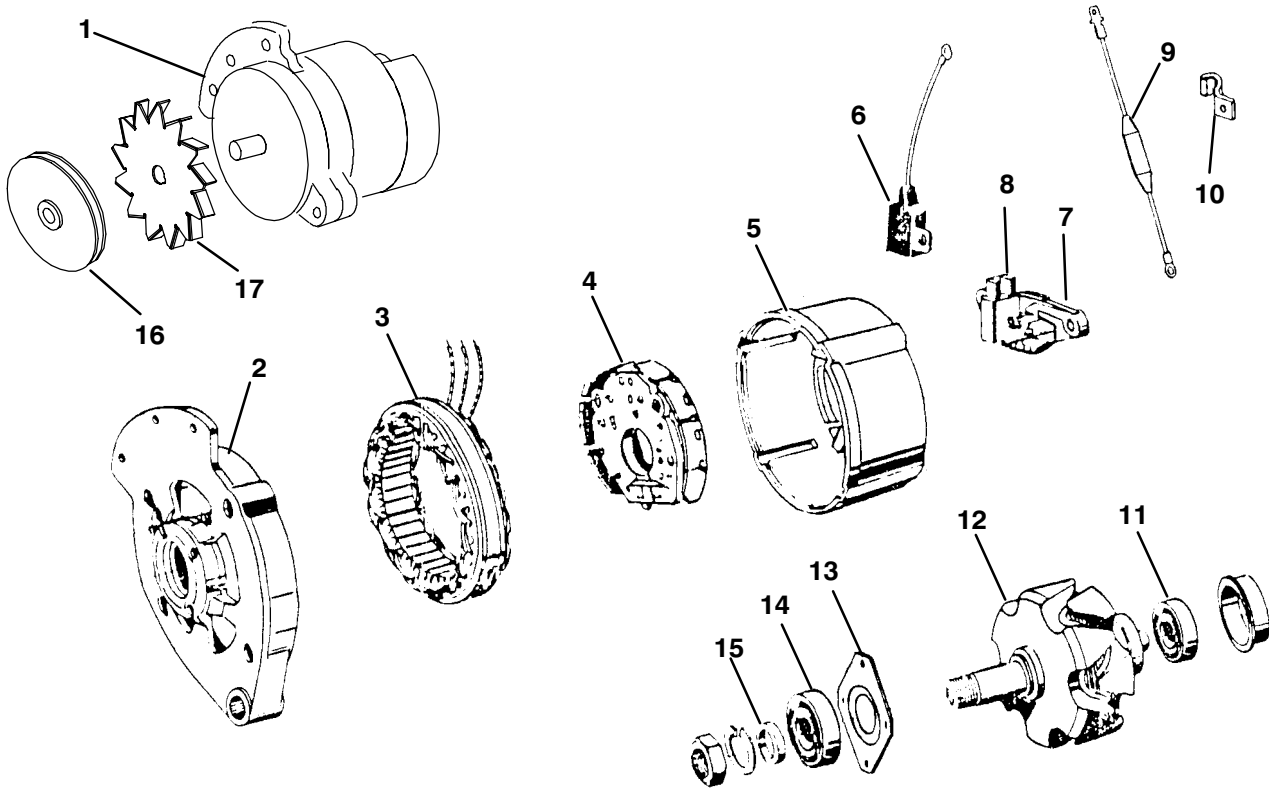
# NDA-93A/94A/94D/NDM-94A/94D

ITEM	PART NO.	DESCRIPTION	QTY
<b>ALTERNATOR SECTION AND RELATED COMPONENTS</b>			
1	50-00207-00	Pulley Assembly, Eccentric Idler -- Includes:	1
2	48-00058-26	Pulley Assembly -- Includes:	1
3	NSS	Ring, Retaining	1
4	04-00018	Bearing	1
5	48-00058-02	Bolt, Shoulder	1
6	48-00058-05	Spacer	1
7	48-00267-00	Eccentric	1
8	34-00368-15	Washer, Lock, 1/2 Spring	2
9	34-00309-12	Screw, Hex Head, 1/2-20 x 1-1/2 Grade 5	1
10	--	Alternator -- Refer to Section AUCUN LIEN	1
11	34-00878-20	Screw, Cap Hex Head, 1/2-13 x 2-1/2 Grade 8 (NSI)	1
12	--	Fan, Alternator (Counter Clockwise Rotation) -- Refer to Section	
AUCUN LIEN	1		
NS	--	Spacer, Fan -- Refer to Section AUCUN LIEN	1
13	--	Pulley, Alternator -- Refer to Section AUCUN LIEN	1
14	42-01153-00	Insulation, Belt Guard -- <b>Units Without By-Pass Oil Filter</b>	1
14	42-01140-00	Insulation, Belt Guard -- <b>Units With By-Pass Oil Filter (NSI)</b>	1
15	34-00918-06	Screw, Machine, Hex Head, 1/4-20 x 3/4 w/cap washer	4
16	86-02817-00	Guard, Belt -- <b>Units Without By-Pass Oil Filter</b>	1
NS	86-04054-00	Guard, Belt -- <b>Units With By-Pass Oil Filter</b>	1
17	50-00162-08	V-Belt (Notched), 32.00 lg	1
18	34-00302-10	Screw, Hex Head, 5/16-18 x 1-1/4, SAE Grade 5 (NSI)	2
19	PL	Washer, Lock, 3/8 Spring	A/R
20	PL	Washer, Plain, 3/8	A/R
21	68-11557-00	Strap, Alternator Mounting	1
22	34-00304-08	Screw, Cap Hex Head, 3/8-16 x 1 Grade 5	3
23	86-02818-00	Bracket	1
24	PL	Washer, Plain, 5/16	2
25	PL	Washer, Lock, 5/16	2
26	58-01288-01	Rivet, Ratchet	A/R
27	68-07328-00	Bracket, Alternator Mount	1

# NDA-93A/94A/94D/NDM-94A/94D

ITEM	PART NO.	DESCRIPTION	QTY
------	----------	-------------	-----

**ALTERNATOR (BOSCH)**



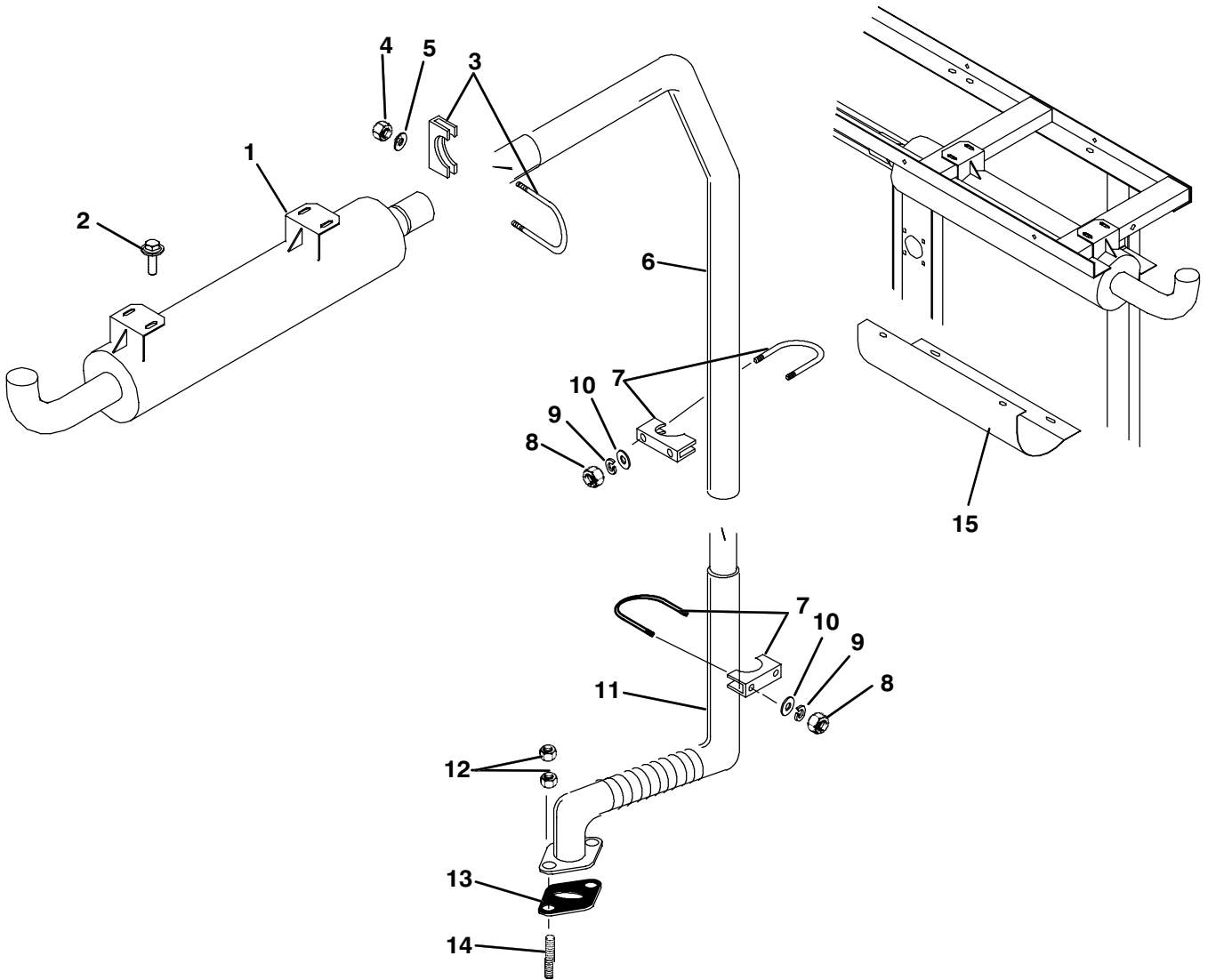
1	30-00393-00	Alternator Assembly (65 amp) (Bosch) -- Includes:	1
2	30-00393-20	Housing, Front (NSI)	1
3	30-00393-32	Stator Assembly (NSI)	1
4	30-00393-28	Rectifier, Alternator	1
5	30-00393-27	Housing, Rear (NSI)	1
6	30-00393-36	Capacitor	1
7	30-00393-30	Regulator and Brush Assembly -- Includes:	1
8	NSS	Brush Assembly	2
9	30-00393-35	Resistor, Assembly	1
10	30-00393-37	Clip (NSI)	1
11	30-00393-26	Bearing, Rear	1
12	30-00393-24	Rotor Assembly	1
13	30-00393-22	Plate, Support (NSI)	1
14	30-00393-21	Bearing, Front	1
15	30-00393-25	Spacer	1
16	50-01127-07	Pulley, Alternator	1
17	30-00395-01	Fan, Alternator (Counter Clockwise Rotation)	1
NS	30-00396-00	Spacer, Fan	1



# NDA-93A/94A/94D/NDM-94A/94D

ITEM	PART NO.	DESCRIPTION	QTY
------	----------	-------------	-----

## ENGINE EXHAUST SYSTEM

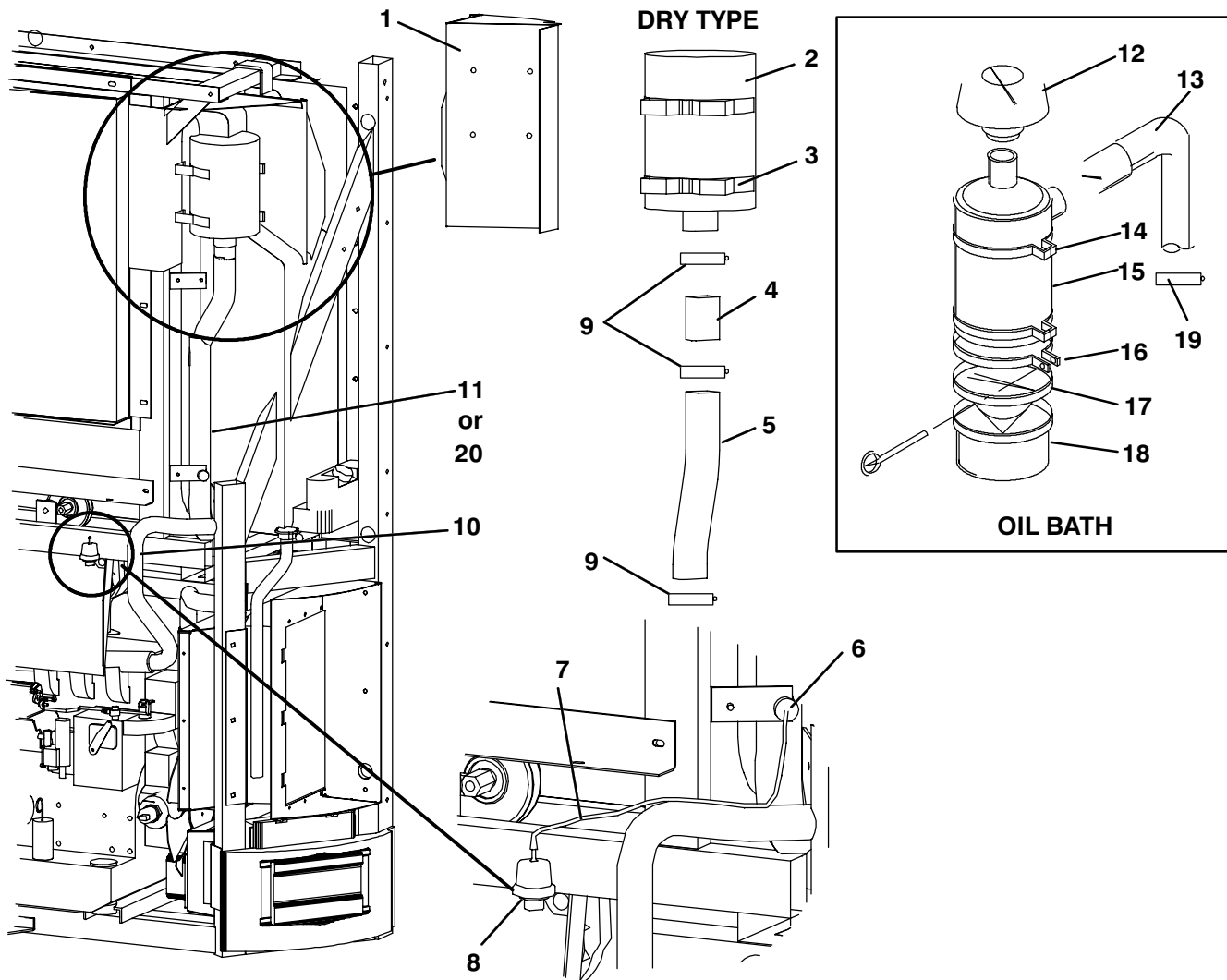


1	30-00401-00	Muffler	1
2	34-00918-06	Screw, Hex Head w/cap washer, 1/4-20 x 3/4	A/R
3	30-00175-01	Clamp, Tubing, 2 inch Dia -- Includes:	1
4	PL	Nut, Hex, 5/16-18	2
5	PL	Washer, Plain, 5/16	2
6	30-00402-00	Pipe, Exhaust	1
7	30-01052-00	Clamp, Tubing, 1-3/4 Dia -- Includes:	2
8	PL	Nut, Hex, 3/8-16	2
9	PL	Washer, Lock, 3/8	A/R
10	PL	Washer, Plain, 3/8	A/R
11	30-00402-01	Pipe, Exhaust	1
12	34-00932-13	Nut, Hex, 3/8-24 (Brass)	4
13	25-37238-00	Gasket, Flange	1
14	34-00964	Stud, Exhaust (Special)	2
15	68-11581-00	Heat Shield	1

# NDA-93A/94A/94D/NDM-94A/94D

ITEM	PART NO.	DESCRIPTION	QTY
------	----------	-------------	-----

## AIR FILTER ASSEMBLY

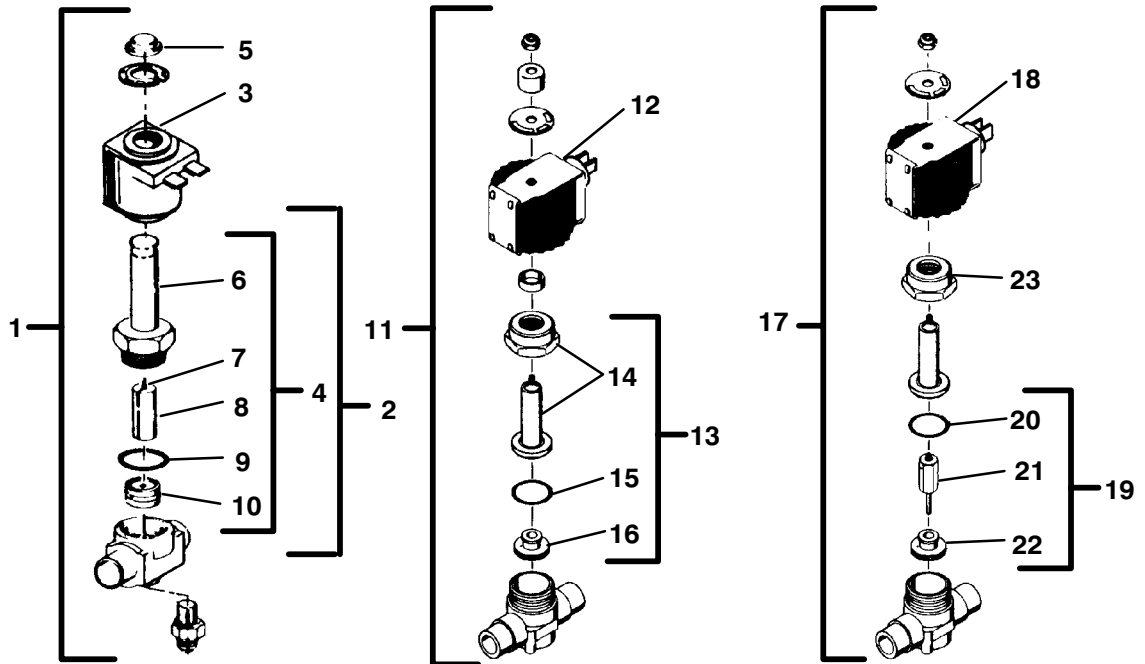


1	86-02793-01	Bracket, Air Cleaner, <b>Dry Type -- Prior to S/N DAY90283472</b>	1
1	86-04147-00	Bracket, Air Cleaner, <b>Dry Type -- Starting with S/N DAY90283472</b>	1
2	30-01077-01	Air Cleaner, <b>Dry Type</b>	1
3	79-02257-00	Clamp, Air Filter, <b>Dry Type</b> (Set of two)	1
4	86-04053-00	Tube Assembly, <b>Dry Type</b>	1
5	58-01298-00	Hose, Formed, Air Inlet, <b>Dry Type -- Prior to S/N DAY90283472</b>	1
5	58-04249-00	Hose, Formed, Air Inlet, <b>Dry Type -- Starting with S/N DAY90283472</b>	1
6	40-00506-00	Fitting, Push On, <b>Dry Type</b>	1
7	58-04102-00F10	Hose (10 ft cut to length)	A/R
8	30-00406-00	Indicator, Air Filter, <b>Dry Type</b>	1
9	44-00045-05	Clamp, Hose	A/R
10	58-04074-00	Hose, Formed	1
11	86-04040-00	Tube Assembly, <b>Dry Type</b>	1
12	30-00356	Hood, Air Inlet, <b>Oil Bath</b>	1
13	58-04076-00	Hose, Formed, Air Inlet, <b>Oil Bath</b>	1
14	44-00022-02	Clamp, Air Cleaner, <b>Oil Bath</b>	2
15	30-00336	Air Cleaner, <b>Oil Bath -- Includes:</b>	1
16	30-00336-20	Clamp	1
17	30-00336-22	Cup, Inner	1
18	30-00336-21	Cup, Oil	1
19	44-00045-04	Clamp, Hose, <b>Oil Bath</b>	2
20	86-04040-01	Tube Assembly, <b>Oil Bath (NSI)</b>	1
NS	86-02793-00	Bracket, Air Cleaner, <b>Oil Bath</b>	1

# NDA-93A/94A/94D/NDM-94A/94D

ITEM	PART NO.	DESCRIPTION	QTY
------	----------	-------------	-----

## SOLENOID VALVES



**ALCO SV-2 & SV-4**

**SPORLAN SV-1**

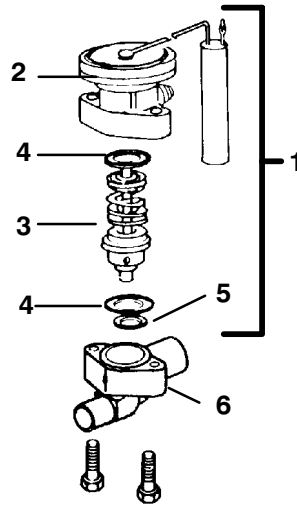
**SPORLAN SV-3**

1	14-00150-14	Valve, Solenoid ( <b>SV-2 &amp; SV-4</b> ) -- Includes:	1
2	14-00150-13	Valve, Solenoid ( <b>SV-2 &amp; SV-4</b> )	1
3	22-02567-00	Coil (12 vdc) ( <b>Spade Terminals</b> )	1
NS	22-02579-00	Coil (12 vdc) ( <b>Plug Connection</b> )	1
4	16-00512-02	Kit, Repair ( <b>SV-2 &amp; SV-4</b> ) -- Includes:	1
5	17-40408-02	Snap Cap	1
6	NSS	Enclosing Tube	1
7	NSS	Spring	1
8	NSS	Plunger	1
9	NSS	O-Ring	1
10	NSS	Piston	1
11	14-01114-00	Valve, Solenoid ( <b>SV-1</b> ) -- Includes:	1
12	14-00147-05	Coil (12 vdc) (spade terminals)	1
13	14-01114-50	Kit, Repair ( <b>SV-1</b> ) -- Includes:	1
14	NSS	Enclosing Tube (with plunger)	1
15	NSS	Gasket	1
16	NSS	Seat Disc	1
17	14-01113-00	Valve, Solenoid ( <b>SV-3</b> ) -- Includes:	1
18	14-00145-03	Coil (12 vdc) (spade terminals)	1
19	14-01113-50	Kit, Repair ( <b>SV-3</b> ) -- Includes:	1
20	NSS	Gasket	1
21	NSS	Stem and Plunger	1
22	NSS	Seat Disc	1
23	16-00224-02	Enclosing Tube	1
NS	34-06026-00	Pin, Roll (Coil Pin)	A/R

# NDA-93A/94A/94D/NDM-94A/94D

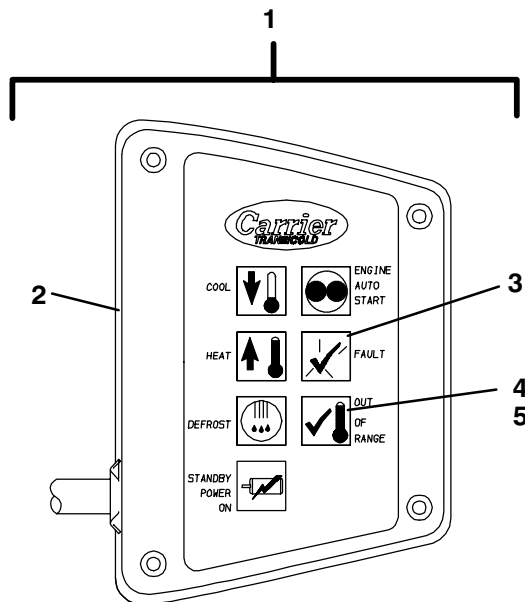
ITEM	PART NO.	DESCRIPTION	QTY
------	----------	-------------	-----

## THERMOSTATIC EXPANSION VALVE



1	14-01104-04	Kit, Repair -- <b>R-22</b> -- Includes:	1
1	14-01095-05	Kit, Repair -- <b>R-404A</b> -- Includes: (NSI)	1
2	NSS	Power Head Assembly and Gaskets, Item 5	1
3	NSS	Cage Assembly and Gasket, Item 6	1
NS	66U1-6225	Gasket Set, Universal -- Includes:	1
4	NSS	Gasket, Body Flange -- Alco #A625	2
5	NSS	Gasket, Seat -- Alco #A625	1
6	14-01094-00	Body, Valve	1

## INDICATING LAMP BAR

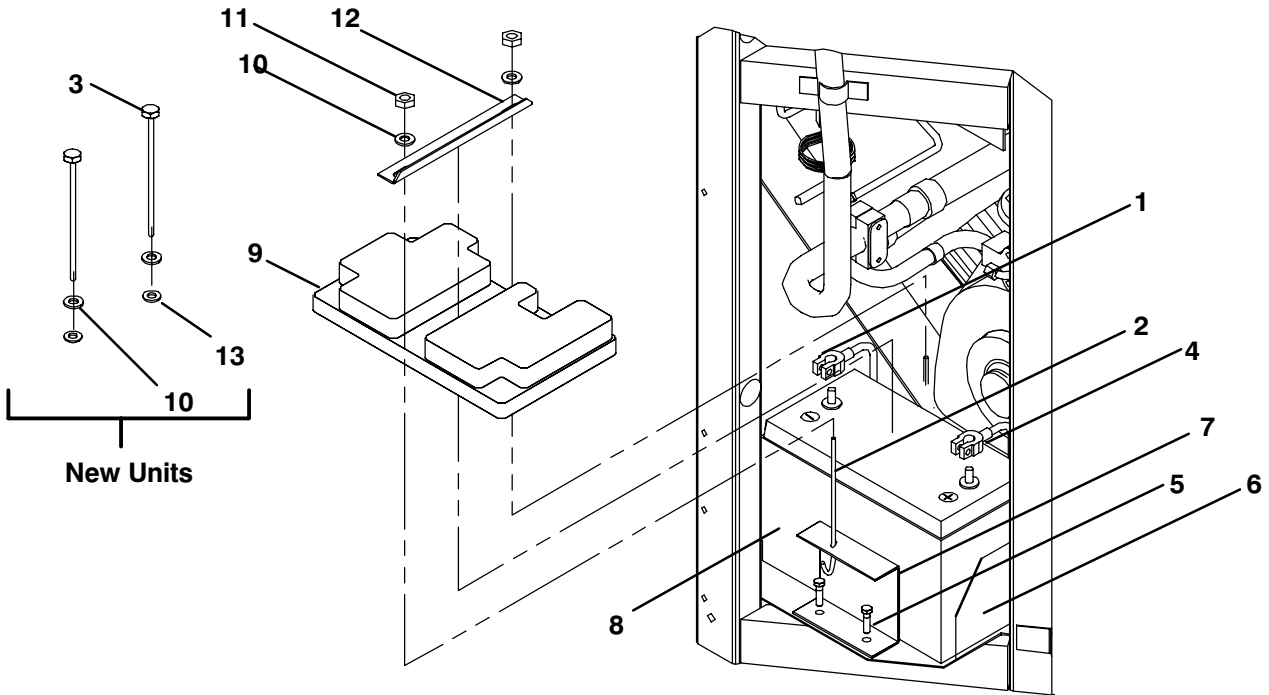


1	76-50001-01	Kit, Light Bar Assembly -- Includes:	1
2	22-01465-51SV	Housing -- Includes:	1
3	22-01465-50	Decal, Light Bar Face	1
4	22-01467-00	Lamp, Wedge Base	7
5	22-01468-20	Holder, Lamp	A/R
NS	68-11009-00	Bracket, Light Bar Mounting	1
NS	22-50078-04SV	Connector, Male 8 pin (mates with 22-50078-03)	1
NS	22-50078-03SV	Connector, Female 8 pin (mates with 22-50078-04)	1

# NDA-93A/94A/94D/NDM-94A/94D

ITEM	PART NO.	DESCRIPTION	QTY
------	----------	-------------	-----

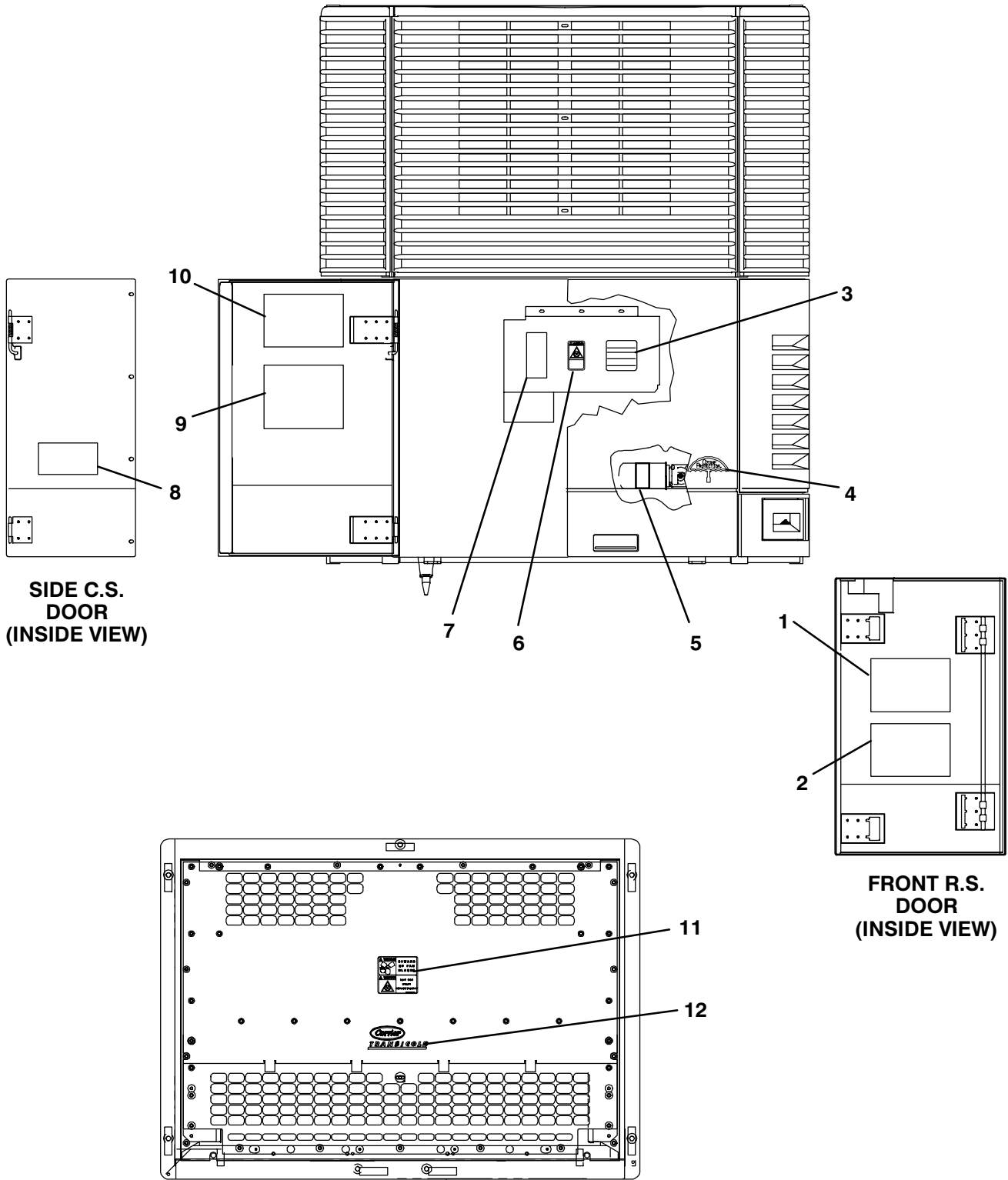
## BATTERY BOX



1	22-01633-01	Battery Cable, Negative -- <b>Post Type</b>	1
1	22-01633-03	Battery Cable, Negative -- <b>Screw Type</b>	1
2	34-00955-05	J-Bolt, Battery Hold-Down	2
3	34-01247-44	Screw, Cap, Hex Head, 5/16-18 x 5-1/2 lg -- SST	2
4	22-01633-00	Battery Cable, Positive -- <b>Post Type</b>	1
4	22-01633-02	Battery Cable, Positive -- <b>Screw Type</b>	1
5	34-00918-06	Screw, Hex Head w/cap washer, 1/4-20 x 3/4	2
NS	79-02262-00SV	Tray Assembly, Battery -- Includes:	1
6	NSS	Tray, Battery	1
7	68-11668-00	Bracket	1
8	PL	Battery, 12 volt	1
9	58-04103-00	Battery Cover	1
10	34-00662-12	Washer, Plain, 5/16 -- SST (NSI)	2
11	PL	Nut, Self Lock, 5/16-18	2
12	68-11596-00	Channel, Battery Hold-Down	1
13	34-00663-12	Lockwasher, 5/16 -- SST	2
NS	62-03364-00	Label, Corrosive (NSI)	2

# NDA-93A/94A/94D/NDM-94A/94D

## DECALS AND WIRE HARNESSES



# NDA-93A/94A/94D/NDM-94A/94D

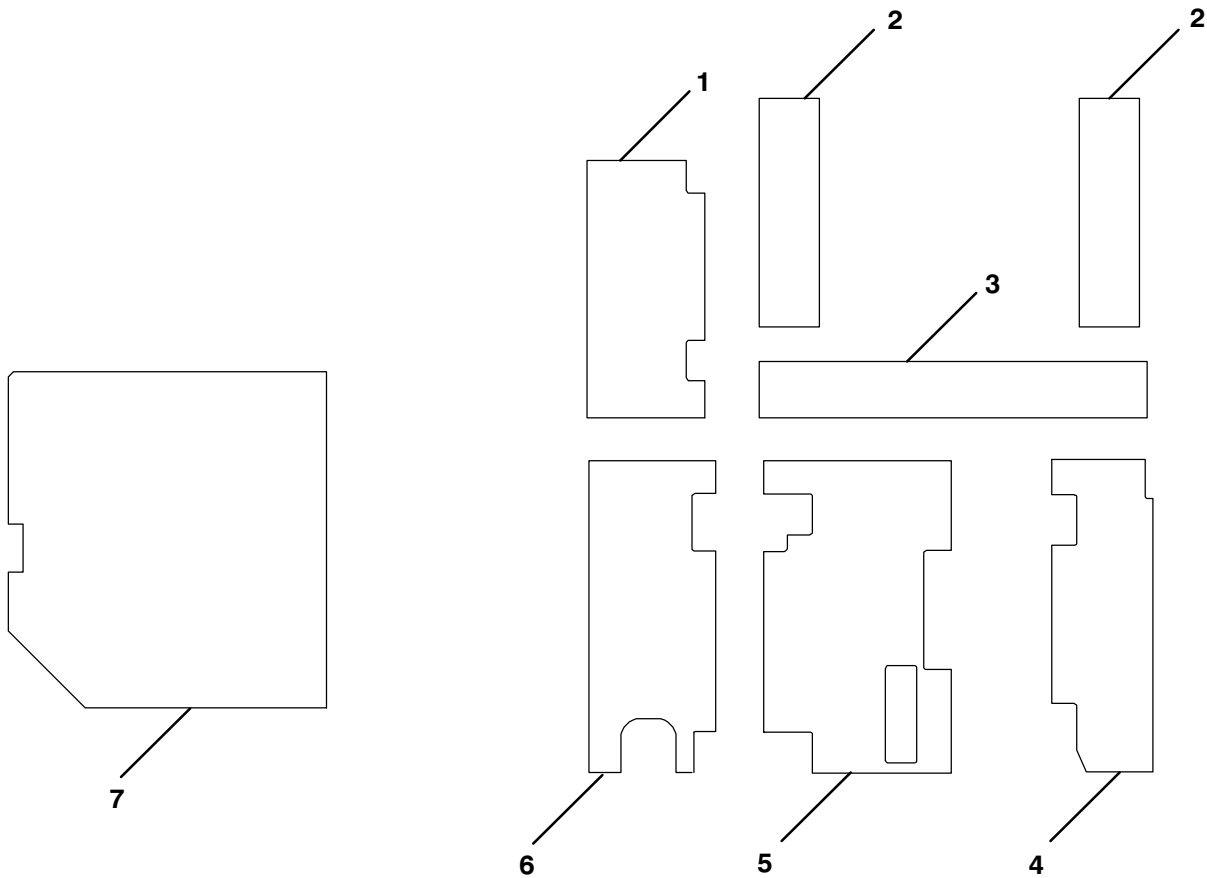
ITEM	PART NO.	DESCRIPTION	QTY
<b>DECALS AND WIRE HARNESSSES</b>			
NS	22-01635-00	Harness, Unit - - <b>Prior to S/N DAC90195287</b>	1
NS	22-02557-00	Harness, Unit - - <b>S/N DAC90195287 to DAF90209292</b>	1
NS	22-01725-00	Harness, Unit - - <b>Starting with S/N DAN90244293</b>	1
NS	22-02633-00	Harness	1
1	62-02478-02	Label, Operating Instructions, Driver (NSI)	1
2	62-02504-00	Label, Operating Instructions, Additional - - <b>NDM-94A Domestic</b>	1
2	62-02501-00	Label, Operating Instructions, Additional - - <b>NDM-94A Euro (NSI)</b>	1
3	62-03802-12	Label, RTF (NSI)	1
4	62-02391-00	Decal, Ozone Protection	1
5	62-01803-00	Decal, Service (NSI)	1
6	62-02146-00	Decal, Warning, Auto Start	1
7	62-02144-00	Decal, Danger, Belt Rotation	1
8	62-02139-00	Decal, Warning (NSI)	1
9	62-03919-00	Decal, Bleeding of Fuel System	1
10	62-02465-00	Decal, Belt Replacement - - <b>NDA-94A</b>	1
10	62-02499-00	Decal, Belt Replacement - - <b>NDM-94A</b>	1
11	62-02509-00	Decal, Warning (NSI)	1
12	62-03882-00	Decal, CTD	1
NS	62-02142-00	Decal, Caution, Radiator Fill - - Located on Side of Evaporator Pod Above the Coolant Bottle (NSI)	1
NS	62-02505-00	Decal, Caution - - Located on Battery Cover (NSI)	1
NS	62-02253-00	Decal, Warning, Disconnect Power - - <b>NDM-94A</b> - - Located Above the Relay Box (NSI)	1
NS	62-02140-00	Decal, Service Action Line	1
NS	62-03895-02	Decal, Service 24 hr ETO # - - <b>NDM-94A Euro (NSI)</b>	1
NS	62-02449-00	Label, Operating Instructions, Basic - - <b>NDM-94A Domestic</b> Located on Microprocessor Door (NSI)	1
NS	62-02502-00	Label, Operating Instructions, Basic - - <b>NDM-94A Euro</b> Located on Microprocessor Door (NSI)	1

Schematic	Description
62-02457-00	NDA-94A - - <b>Prior to S/N DAC90195287</b>
62-03885-00	NDA-94A - - <b>S/N DAC90195287 to DAF90209263</b>
62-02589-00	NDA-94A - - <b>Starting with S/N DAF90209264</b>
62-02620-00	NDM-94A - - Domestic
62-02590-00	NDM-94A - - Euro
62-02592-00	NDM-94A - - 230 v 60 hz Phase Reversal
62-02685-00	NDM-94A - - 200/230v Phase Reversal
62-02573-00	NDM-94A - - 380 v 50 hz Phase Reversal

# NDA-93A/94A/94D/NDM-94A/94D

ITEM	PART NO.	DESCRIPTION	QTY
------	----------	-------------	-----

**NOISE REDUCTION**



1	42-00277-00	Insulation, Curb Side Door (Upper) (NSI)	1
2	42-01150-00	Insulation, Grille (NSI)	2
3	42-01151-00	Insulation, Grille (NSI)	1
4	42-01167-00	Insulation, Front Road Side Door (NSI)	1
5	42-00275-00	Insulation, Front Curb Side Door (NSI)	1
6	42-00274-02	Insulation, Curb Side Door (NSI)	1
7	42-00279-00	Insulation, Cover (Rear) (NSI)	1
NS	58-01214-00	Plug, Plastic (for Front and Side Doors)	A/R
NS	58-01288-01	Rivet, Ratchet (Plastic) (For Front and Curb Side Grille)	A/R
NS	68-11674	Rear Cover	1
NS	68-11673	Louvered Bottom Panel	1

**See Note**

NS	76-00653-00	Kit, Noise Reduction (Bottom Cover with insulation) -- Includes:	1
NS	34-00918-06	Screw, Hex Head w/washer 1/4-20 x .75	4
NS	34-06051-06	Rivnut, 1/4-20	4
NS	42-00264-00	Seal, Black Trim (NSI)	A/R
NS	42-00280-00	Insulation, Bottom Cover (NSI)	4
NS	42-00280-01	Insulation, Bottom Cover (NSI)	1
NS	42-00280-06	Insulation, Bottom Cover (NSI)	1
NS	58-00065-09	Grommet, 1.03 ID x 1.22 OD (NSI)	1
NS	68-11673-00	Cover	1
NS	68-11675-00	Angle (NSI)	1
NS	68-11676-00	Angle (NSI)	1

**Note:** These parts are used to secure insulation to door or grille.